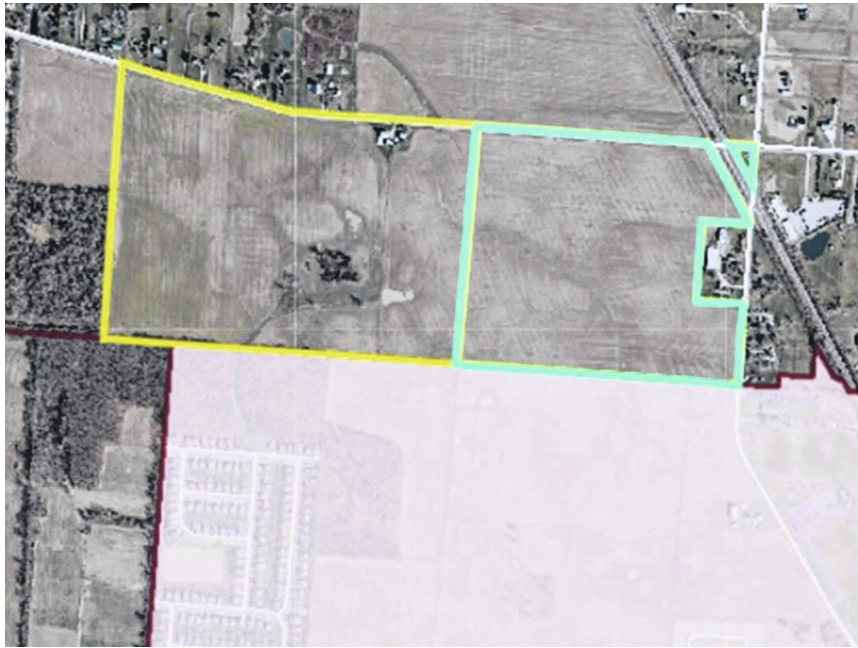


## 175 acres in Troy Twp. going to city

By Gary Budzak – June 4, 2026



DEL CITY — Over the objection of a Troy Township trustee, the Delaware County Board of Commissioners on Thursday approved a petition requesting annexation of 175 acres of land to the City of Delaware.

The Price Farms Annexation (also known as the Price Trusts II Annexation) is south of Hills-Miller Road and west of Troy Road. Delaware City Council approved the pre-annexation of the Price Farms property on April 27.

Chairman Doug Price told the commissioners that he and his fellow trustees — Earl Lehner and Troy Morris — opposed the annexation, citing the lack of a date for the City of Delaware to provide sewer services to the area. The trustees formally passed their resolution on May 28.

Price also said the trustees received a letter from Delaware City Manager Paul Brake clarifying the maintenance of Troy and Hills-Miller roads on June 3, and they hadn't had time to study it. There was also concern that Houk Road could be extended to Hills-Miller, leading to increased traffic in the area.

"Troy is mainly a single-family residential, rural area," said the township's website. "With the northern expansion of Delaware City, the southern portion of the Township may encounter suburban growth pressures in the future. The Olentangy River and Delaware Lake are two significant features in the township recommended for conservation through lower densities and encouragement of conservation subdivision design. The U.S. Route 23 corridor is to be the

commercial base of the township, with access management and architectural guidelines strongly emphasized.”

Prior to the commissioners' approval, an administrative review was given by Attorney Aric Hostettler, who is also Delaware County deputy administrator. He said the petition met all of the seven necessary requirements, including that the annexation did not exceed 500 acres, and that the land was contiguous with the city.

“The township's objection is not well-founded,” Hochstettler said.

While the review was not a hearing, noted County Commissioner Jeff Benton, there were three people who spoke in favor of the annexation. They were Attorney Michael Shade (representing co-trustees Phyllis Price and Julia Ann Clase of the Paul Price trust), Columbus-based Attorney Jill Tangeman, and developer Bill Keethler with Dublin-based Corridor Company LLC. Among the comments were that the Price family had deliberated extensively on what to do with the land, and will continue to live in Troy Township, where the late Paul Price had also served as a township trustee. It was also said that the property could support a new Delaware City Schools building for the growing area.

Commissioner Barb Lewis noted that this was an expedited type two annexation. “It seems clear to me that we have to approve it,” she said prior to the vote.

In other business, the commissioners also approved:

- Two separate annexation petitions from Delaware Township into the City of Delaware without comment. The annexations total about 102 acres.
- “A cash lease with Dawson Farms Inc. for county farmland located at Byxbe Parkway and Bowtown Road,” the agenda said.
- Declaring eight county vehicles to be obsolete.

In commissioner comments, Benton said he had attended the groundbreaking for a fifth Olentangy High School, marveling at the district's growth in Delaware County.

Commissioner context

- The Board of Commissioners of Delaware County are President for 2026 Jeff Benton, Barb Lewis, and Vice President Gary Merrell. They typically meet twice weekly in The Historic Courthouse, 91 N. Sandusky St., Delaware.
- Jennifer Walraven is Clerk to the Commissioners. Attendees include Tracie Davies, County Administrator; Deputy County Administrators Aric Hochstettler and Dawn Huston; Tiffany Maag, Director of Environmental Services and Regional Sewer District.
- The commissioners are elected officials. Other county offices that are elected are: Auditor, clerk of courts, common pleas court, coroner, domestic relations court, engineer, juvenile court, probate court, prosecutor, recorder, sheriff, treasurer.

- For more information, visit Delaware County Ohio (Facebook); delawarecoohio (Instagram); Delaware County, Ohio (LinkedIn); [www.co.delaware.oh.us](http://www.co.delaware.oh.us) (website).
- Organizations attended by trio include The County Commissioners Association of Ohio, which “advances effective county government for Ohio,” it said. It is based in Columbus. For more information, visit [ccao.org](http://ccao.org). Another is the Ohio Council of County Officials, or OCCO ([ohiocountyofficials.org](http://ohiocountyofficials.org)).