

**CESO**  
WWW.CESOINC.COM

2800 Corporate Exchange Dr., Suite 400  
Columbus, OH 43231  
Phone: 614.794.1980 Fax: 688.208.4826

NOTE "A": NOTICE IS HEREBY GIVEN TO ANY BUYER OF THE LOTS DELINEATED UPON THIS PLAT, THAT ON FILE WITH THE BUILDING DEPARTMENT OF DELAWARE COUNTY, ARE SITE IMPROVEMENTS PLANS FOR THE DEVELOPMENT OF SAID LOTS SHOWING PROPOSED LOT DRAINAGE, PROPOSED GROUND ELEVATION AT HOUSE AND/OR LOT GRADING PLANS, AS APPROVED BY THE GOVERNMENTAL AGENCIES ARE CONSIDERED PART OF THE APPROVAL OF THIS SUBDIVISION AND ARE TO BE INCORPORATED INTO THE FINAL PLOT PLAN REQUIRED WITH THE BUILDING PERMIT.

NOTE "B": ZONING SETBACKS REFLECT CURRENT ZONING STANDARDS AT THE TIME OF THE ZONING INSPECTOR'S SIGNATURE OF THE FINAL PLAT AND ARE NOT SUBDIVISION PLAT RESTRICTIONS. SITE IS CURRENTLY ZONED PLANNED RESIDENTIAL DISTRICT (PRD) SETBACKS  
BUILDING SETBACK: 20 FEET  
EMERGENCY ACCESS PAVEMENT SETBACK: 35 FEET  
PRIVATE PAVEMENT ALONG LOT 6832 SETBACK: 120 FEET

NOTE "C": ACREAGE BREAKDOWN  
ACREAGE IN RIGHT-OF-WAY: 0.582 ACRES  
ACREAGE IN LOT 7593 (BUILDABLE): 35.889 ACRES  
TOTAL ACREAGE: 36.471 ACRES

ACREAGE IN PID 60034202013000: 7.059 ACRES  
ACREAGE IN PID 60034202016000: 29.412 ACRES  
TOTAL ACREAGE: 36.471 ACRES

NOTE "D": A NON-EXCLUSIVE EASEMENT IS HEREBY SPECIFICALLY GRANTED UNTO DEL-CO WATER COMPANY INC., ITS SUCCESSORS AND ASSIGNS, FOR THE LOCATION OF WATER LINES, VALVES AND APPURTENANCES WITHIN THE RIGHTS-OF-WAY HEREBY DEDICATED AND WITHIN AREAS DESIGNATED HEREON AS "UTILITY EASEMENT" OR "MULTI-USE PATH EASEMENT" THAT ARE LOCATED ALONGSIDE THE RIGHTS-OF-WAY HEREBY DEDICATED. ALSO GRANTED IS THE RIGHT OF DEL-CO WATER COMPANY, TO INSTALL, SERVICE AND MAINTAIN WATER METER CROCKS AND APPURTENANCES IN SAID EASEMENT AREAS ALONGSIDE SAID RIGHTS-OF-WAY. THE EASEMENT AREA SHALL BE FOR THE UNOBSTRUCTED USE OF DEL-CO WATER COMPANY, INC. PLACEMENT OF FENCES, WALLS, PILLARS, TREES, GARDENS, SHRUBBERIES, AND OTHER SURFACE FEATURES IS STRICTLY PROHIBITED.

NOTE "E": ON FILE WITH COUNTY ENGINEERING, BUILDING, HEALTH AND PLATTING AUTHORITIES ARE PLANS INDICATING THE NATURE AND LOCATION OF VARIOUS SUBDIVISION IMPROVEMENTS.

NOTE "F": BE ADVISED: A SUB-SURFACE DRAINAGE SYSTEM MAY EXIST ON THIS SITE. THE SYSTEM AND/OR OUTLET IF LOCATED ON THIS PROPERTY MUST BE MAINTAINED AT ALL TIMES.

NOTE "G": AT THE TIME OF PLATTING AS "COURTYARDS ON CONCORD", LIES WITHIN ZONE "X" (AREA OF MINIMAL FLOOD HAZARD) AS SHOWN ON COMMUNITY PANEL NO. 39041C0220K (DATED 4/16/2009).

NOTE "H": AT THE TIME OF PLATTING, ELECTRIC, CABLE AND TELEPHONE SERVICE PROVIDERS HAVE NOT ISSUED INFORMATION REQUIRED SO THAT EASEMENT AREAS, IN ADDITION TO THOSE SHOWN ON THIS PLAT AS DEEMED NECESSARY BY THESE PROVIDERS FOR THE INSTALLATION AND MAINTENANCE OF ALL OF THEIR MAIN LINE FACILITIES, COULD CONVENIENTLY BE SHOWN ON THIS PLAT. EXISTING RECORDED EASEMENT INFORMATION DESIRED ABOUT SUBDIVISION PLAT OF "COURTYARDS ON CONCORD", PLAT OR ANY PART THEREOF CAN BE ACQUIRED BY A COMPETENT EXAMINATION OF THE THEN CURRENT PUBLIC RECORD, INCLUDING THOSE IN THE DELAWARE COUNTY RECORDER'S OFFICE.

NOTE "I": WITHIN THOSE AREAS OF LAND DESIGNATED "DRAINAGE EASEMENT" (DRN. ESMT.), AN EASEMENT IS HEREBY RESERVED FOR MAINTAINING STORM WATER DRAINAGE SWALES AND/OR OTHER STORM WATER DRAINAGE FACILITIES ALONG WITH GRANTING DELAWARE COUNTY, ITS SUCCESSORS OR ASSIGNS THE RIGHT OF INGRESS AND EGRESS FROM THE PUBLIC RIGHT-OF-WAY TO THE DRAINAGE EASEMENT AS DEFINED ABOVE. PURSUANT TO ORC SECTION 6137, DELAWARE COUNTY, ITS SUCCESSORS OR ASSIGNS, SHALL TAKE CORRECTIVE MEASURES OR REPAIRS TO RESTORE THE CULVERT AND/OR WATER COURSE, IF NECESSARY, INCLUDING THOSE ACTIONS CAUSED BY AN EMERGENCY SITUATION. THE COST ASSOCIATED WITH THESE CORRECTIVE MEASURES SHALL BE ASSESSED TO THE OWNER(S).

NOTE "J": FOR ANY EASEMENT SHOWN ON THIS PLAT THAT CONTAINS A STORM SEWER, CULVERT, OVER LAND OPEN DITCH FLOOD ROUTE, DETENTION BASIN, RETENTION BASIN AND/OR OTHER STORM WATER STRUCTURE (HEREIN REFERRED TO AS STORM SEWER), THE STORM SEWER RIGHTS ARE SENIOR TO THE RIGHTS OF ANY OTHER PUBLIC OR PRIVATE UTILITY OR INTEREST UTILIZING THE EASEMENT, EXCEPT FOR OVERLAP AREAS WITH A "SANITARY EASEMENT". ANY COSTS ASSOCIATED WITH THE DAMAGE, REPAIR, REPLACEMENT OR RELOCATION OF ANY BURIED OR ABOVE GROUND FACILITY OR STRUCTURE THAT IS NECESSARY TO ALLOW THE MAINTENANCE, REPAIR OR REPLACEMENT OF THE STORM SEWER SHALL BE THE RESPONSIBILITY OF THE OWNER OF SAID UTILITY, FACILITY OR STRUCTURE. WHEN MAINTENANCE, REPAIR OR REPLACEMENT OF A STORM SEWER CAUSES THE REMOVAL OF ANY TREES, PLANTINGS, LANDSCAPING, FENCE, DRIVEWAY OR ANY OTHER FEATURE LOCATED WITHIN THE EASEMENT, THE REPLACEMENT AND COST OF SAID ITEMS SHALL BE THE RESPONSIBILITY OF THE OWNER OF THE UNDERLYING PROPERTY OR HOMEOWNER'S ASSOCIATION IF APPLICABLE.

NOTE "K": WITHIN THOSE AREAS OF LAND DESIGNATED "DRAINAGE EASEMENT" (DRN. ESMT.) ON THIS PLAT, AN ADDITIONAL EASEMENT IS HEREBY RESERVED FOR THE PURPOSE OF CONSTRUCTING, OPERATING, AND MAINTAINING MAJOR STORM WATER DRAINAGE SWALES AND/OR OTHER ABOVE GROUND STORM WATER DRAINAGE FACILITIES. NO ABOVE GRADE STRUCTURES, DAMS, OR OTHER OBSTRUCTIONS TO THE FLOW OF STORM WATER RUNOFF ARE PERMITTED WITHIN DRAINAGE EASEMENT AREAS AS DELINEATED ON THIS PLAT. EASEMENT AREAS SHOWN HEREON OUTSIDE OF THE PLATTED AREA ARE WITHIN LANDS OWNED BY THE UNDERSIGNED AND EASEMENTS ARE HEREBY RESERVED FOR THE USES AND PURPOSES EXPRESSED HEREIN.

NOTE "L": ANY LANDSCAPE FEATURES, SUCH AS TREES, FENCES, RETAINING WALLS, ETC. IN DRAINAGE EASEMENTS SHALL BE REVIEWED BY THE DELAWARE SOIL AND WATER CONSERVATION DISTRICT (DSWCD) AND THE DELAWARE COUNTY ENGINEER'S OFFICE (DCEO) PRIOR TO INSTALLATION. THE DSWCD AND DCEO WILL REVIEW THE PROPOSED IMPROVEMENTS TO ASSURE THAT THE IMPROVEMENTS WILL NOT INTERFERE WITH THE STORM WATER CONTROL FACILITIES.

NOTE "M": NO BUILDINGS, SHEDS, DECKS, POOLS, OR OTHER SUCH STRUCTURES, OR THE FOOTERS OR FOUNDATIONS OF ANY STRUCTURES OR FEATURES SHALL BE CONSTRUCTED ABOVE OR BELOW GROUND WITHIN THE LIMITS OF ANY DRAINAGE EASEMENTS UNLESS SAID STRUCTURE IS APPROVED IN WRITING BY THE DELAWARE COUNTY ENGINEER'S OFFICE.

NOTE "N": EASEMENTS DESIGNATED AS "SANITARY EASEMENT" (SAN. ESMT.) SHALL MEAN AN EXCLUSIVE SANITARY EASEMENT OVER, THROUGH, UNDER, WITHIN, UPON, AND ACROSS THE AREA DESCRIBED ON THE PLAT, TOGETHER WITH INGRESS AND EGRESS OVER REASONABLE ROUTES ACROSS GRANTOR'S TRACTS THAT ADJOIN THE EASEMENT AREA WHEN EXERCISING THE PURPOSES OF THIS EASEMENT, EXCLUSIVELY FOR CONSTRUCTION, OPERATION AND MAINTENANCE OF PUBLIC AND OR PRIVATE SANITARY SEWERS, SERVICE CONNECTIONS, MANHOLES, FORCE MAINS, VALVES, AND OTHER SANITARY APPURTENANCES. SANITARY EASEMENTS MAY BE CROSSED BY OTHER UTILITIES AS EXPRESSED HEREIN.

NOTE "O": ALL EASEMENTS AND RESERVES THAT OVERLAP OR COVER ALL OR PORTIONS OF A "SANITARY EASEMENT" (SAN. ESMT.) SHALL BE SUBJECT TO THE PROVISIONS OF THE "SANITARY EASEMENT" (SAN. ESMT.) WITHIN THE OVERLAP OR COVER AREAS. WORK TO FACILITATE SURFACE WATER DRAINAGE WITHIN THE OVERLAP OR COVER AREAS IS NOT RESTRICTED; HOWEVER ANY PROPOSED NEW STORM SEWER PIPES, INLETS, CATCH BASINS, STRUCTURES, OR OTHER STORM WATER APPURTENANCES OR INFRASTRUCTURE FEATURES SUBSEQUENT TO THOSE WHICH WERE PERMITTED WITH THE ORIGINAL SANITARY SEWER IMPROVEMENTS SHALL ONLY BE PERMITTED IF APPROVED BY THE GOVERNING STORMWATER AUTHORITY AND THE DELAWARE COUNTY SANITARY ENGINEER.

NOTE "P": OTHER UTILITY CROSSINGS WITHIN THE SANITARY EASEMENT ARE ONLY PERMITTED AS DESCRIBED HEREIN, UNLESS THEY ARE APPROVED ON THE SIGNED SANITARY SEWER PLANS OR OTHERWISE APPROVED IN WRITING BY THE DELAWARE COUNTY SANITARY ENGINEER. RIGHT ANGLE OR NEAR RIGHT ANGLE UTILITY CROSSINGS ("NEAR RIGHT ANGLE" IS DEFINED AS AN ANGLE BETWEEN EIGHTY (80) DEGREES AND ONE-HUNDRED (100) DEGREES) OVER, ACROSS, OR UNDER A SANITARY SEWER OR FORCE MAIN AND OVER, ACROSS, UNDER, OR THROUGH THE SANITARY EASEMENT ARE NOT HEREBY RESTRICTED, EXCEPT THAT ALL UTILITY CROSSINGS UNDER A SANITARY SEWER OR FORCE MAIN SHALL BE SUBJECT TO THE REVIEW AND APPROVAL OF THE DELAWARE COUNTY SANITARY ENGINEER.

NOTE "Q": WHEN MAINTENANCE, REPAIR OR REPLACEMENT OF PUBLIC SANITARY SEWERS, MANHOLES, FORCE MAINS, VALVES, AND OTHER PUBLIC SANITARY APPURTENANCES CAUSES THE REMOVAL OF ANY TREES, PLANTINGS, LANDSCAPING, FENCE, OR ANY OTHER FEATURE LOCATED WITHIN THE SANITARY EASEMENT, WITH THE EXCEPTION OF DRIVEWAYS AND PEDESTRIAN PATHWAYS, THE REPLACEMENT AND COST OF SAID ITEMS SHALL BE THE RESPONSIBILITY OF THE OWNER OF THE UNDERLYING PROPERTY OR HOMEOWNER'S ASSOCIATION IF APPLICABLE.

NOTE "R": THE ADDITION OR REMOVAL OF ANY DIRT, SOIL, FILL, OR OTHER CHANGES TO THE GROUND ELEVATION ABOVE THE SANITARY SEWER OR FORCE MAIN AND/OR WITHIN THE SANITARY EASEMENT SHALL BE SUBJECT TO APPROVAL OF THE DELAWARE COUNTY SANITARY ENGINEER.

NOTE "S": NO BUILDINGS, SHEDS, DECKS, POOLS, OR OTHER SUCH STRUCTURES, OR THE FOOTERS OR FOUNDATIONS OF ANY STRUCTURES OR FEATURES SHALL BE CONSTRUCTED ABOVE OR BELOW GROUND WITHIN THE LIMITS OF THE SANITARY EASEMENT UNLESS SAID STRUCTURE IS APPROVED IN WRITING BY THE DELAWARE COUNTY SANITARY ENGINEER.

NOTE "T": THE DELAWARE COUNTY SANITARY ENGINEER RESERVES THE RIGHT TO REQUIRE THAT ALL EARTHWORK WITHIN THE SANITARY EASEMENT BE GRADED TO SUCH A LEVEL THAT WILL, IN HIS OR HER OPINION, NOT JEOPARDIZE THE STRUCTURAL INTEGRITY OF, INFRINGE UPON, OR LIMIT THE COUNTY'S REASONABLE ACCESS TO THE SANITARY SEWER OR FORCE MAIN.

NOTE "U": NO OTHER UTILITY LINES, CONDUITS, MAINS, VALVES, BOXES, PEDESTALS, TRANSFORMERS, OR OTHER UTILITY APPURTENANCES ARE PERMITTED WITHIN ANY SANITARY EASEMENT UNLESS THEY ARE APPROVED ON THE SIGNED SANITARY SEWER PLANS, OR OTHERWISE APPROVED IN WRITING BY THE DELAWARE COUNTY SANITARY ENGINEER, EXCEPT THAT THE RIGHTS GRANTED TO DELCO WATER COMPANY, ITS SUCCESSORS, AND ASSIGNS TO INSTALL, SERVICE AND MAINTAIN RESIDENTIAL WATER SERVICES, METER CROCKS AND APPURTENANCES AS DESIGNATED ON THIS PLAT ARE NOT RESTRICTED.

NOTE "V": ANY LANDSCAPING FEATURES, SUCH AS, BUT NOT LIMITED TO, TREES, FENCES, SIGNS, STACKABLE RETAINING WALLS, ETC., WITHIN THE SANITARY EASEMENT SHALL BE REVIEWED FOR APPROVAL BY THE DELAWARE COUNTY SANITARY ENGINEER PRIOR TO INSTALLATION.

NOTE "W": APPROVAL OF THIS PLAT BY THE DELAWARE COUNTY REGIONAL PLANNING COMMISSION, THE DELAWARE COUNTY COMMISSIONERS AND/OR ANY OTHER GOVERNMENTAL AUTHORITY SHALL IN NO WAY CONSTITUTE A DEDICATION OR ACCEPTANCE OF THE PRIVATE STREET SHOWN THEREON, AND ALL SUCH PRIVATE STREET(S) SHALL BE AND REMAIN A PRIVATE ACCESS WAY. THE DELAWARE COUNTY REGIONAL PLANNING COMMISSION, THE DELAWARE COUNTY COMMISSIONERS AND EVERY OTHER PUBLIC AUTHORITY SIGNING THIS PLAT SHALL HAVE NO RESPONSIBILITY OR LIABILITY FOR OR ARISING OUT OF THE CONSTRUCTION, IMPROVEMENT, MAINTENANCE AND/OR USE OF ANY SUCH PRIVATE STREET. THE OWNERS OF THESE LOTS AND THEIR SUCCESSORS AND ASSIGNS AGREE TO AND SHALL BE BOUND BY THE FOREGOING PROVISION, WHICH PROVISION SHALL BE DEEMED TO BE AND IS A COVENANT RUNNING WITH THE LAND.

NOTE "X": EASEMENTS DEDICATED AS "PRIVATE ACCESS EASEMENT" (PRIV. ACCESS ESMT.) ARE FOR PID 60034202017002 AND FOR THE SOLE USE AND PURPOSE FOR ACCESS TO THE LOT ADJOINING THIS SUBDIVISION AS SHOWN HEREON AND SHALL REMAIN IN AFFECT FOR PERPETUITY. EMERGENCY ACCESS TO GOVERNMENT OFFICIALS IS PERMITTED WITHIN THE "PRIVATE ACCESS EASEMENT".

Revisions / Submissions

ID	Description	Date

© 2025 CESO, INC.

Project Number:	763329
Scale:	N/A
Drawn By:	OPG
Checked By:	ALB/JKH
Date:	3/27/2026
Issue:	N/A

Drawing Title:

**Courtyards on Concord**  
State of Ohio, County of Delaware, Township of Concord,  
Virginia Military Survey No. 2897



**SURVEY LEGEND**

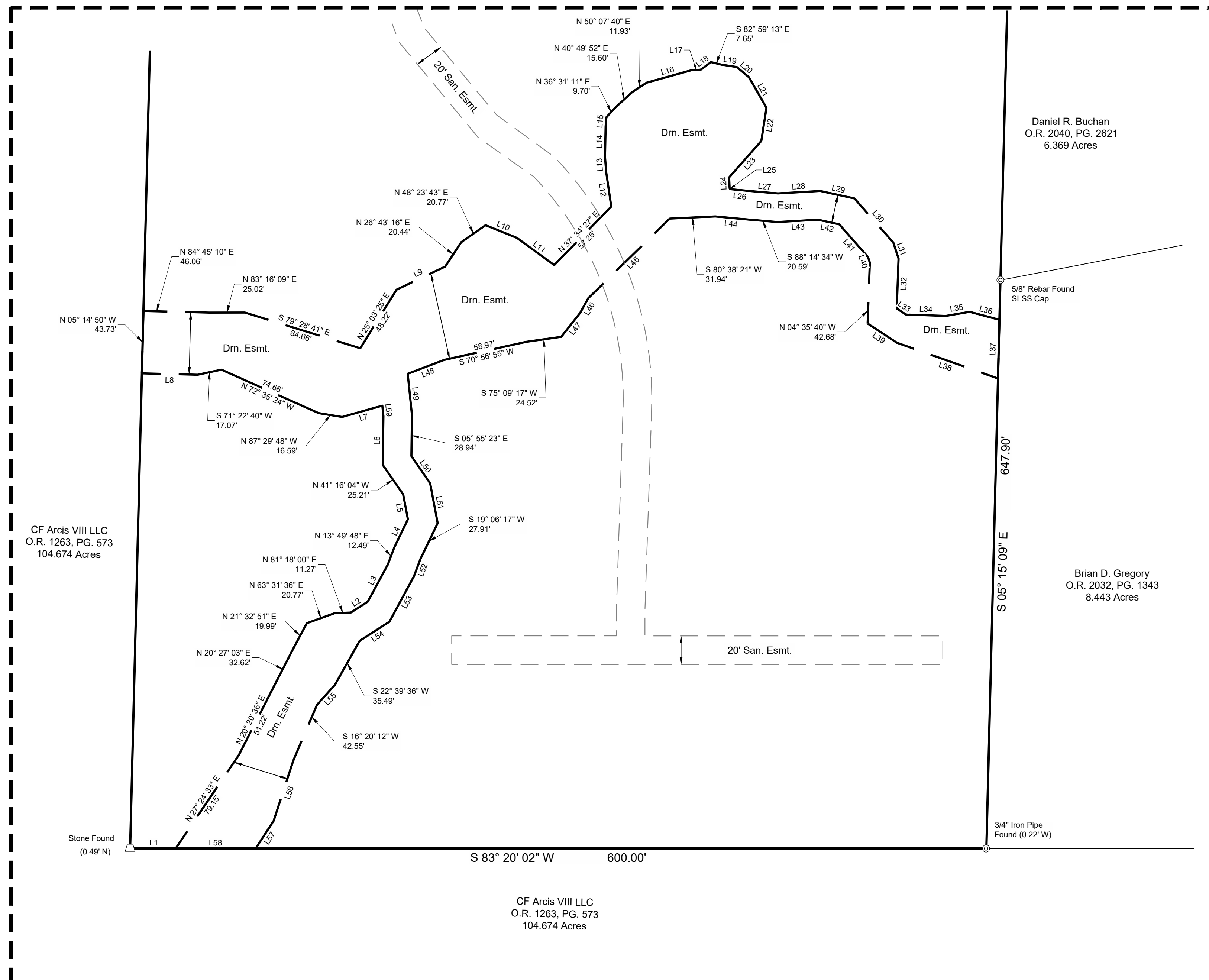
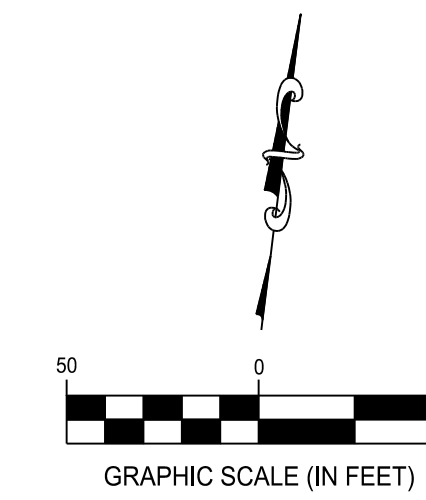
- - 5/8" Iron Pin Set w/cap CESO, Inc
- ⊙ - Monument Found as Described
- △ - Stone Found
- - PK Nail/Mag Nail Found
- △ - PK Nail/Mag Nail Set

**EASEMENT LEGEND**

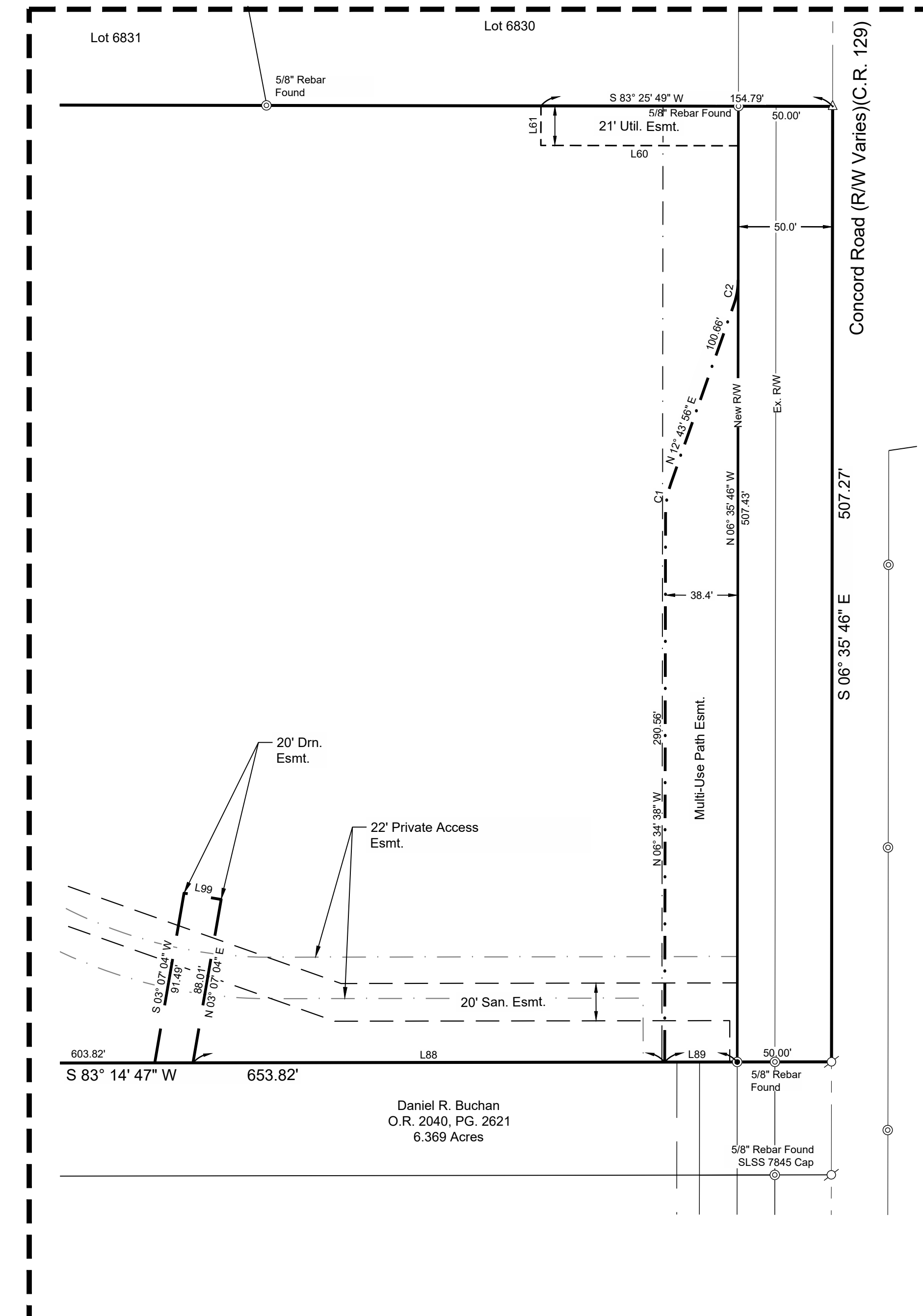
- Drainage Easement
- Private Access Easement
- Sanitary Easement
- Existing Easement
- Building Setback
- Multi-Use Path Easement

**NOTE:**

See sheet 4 for drainage easement and multi use path easement details.  
 See sheet 5 for sanitary easement details.  
 See sheet 6 for private access easement details.  
 See sheet 7 for vacation of easements.



**DETAIL A**  
1"=50'



**DETAIL B**  
1"=50'

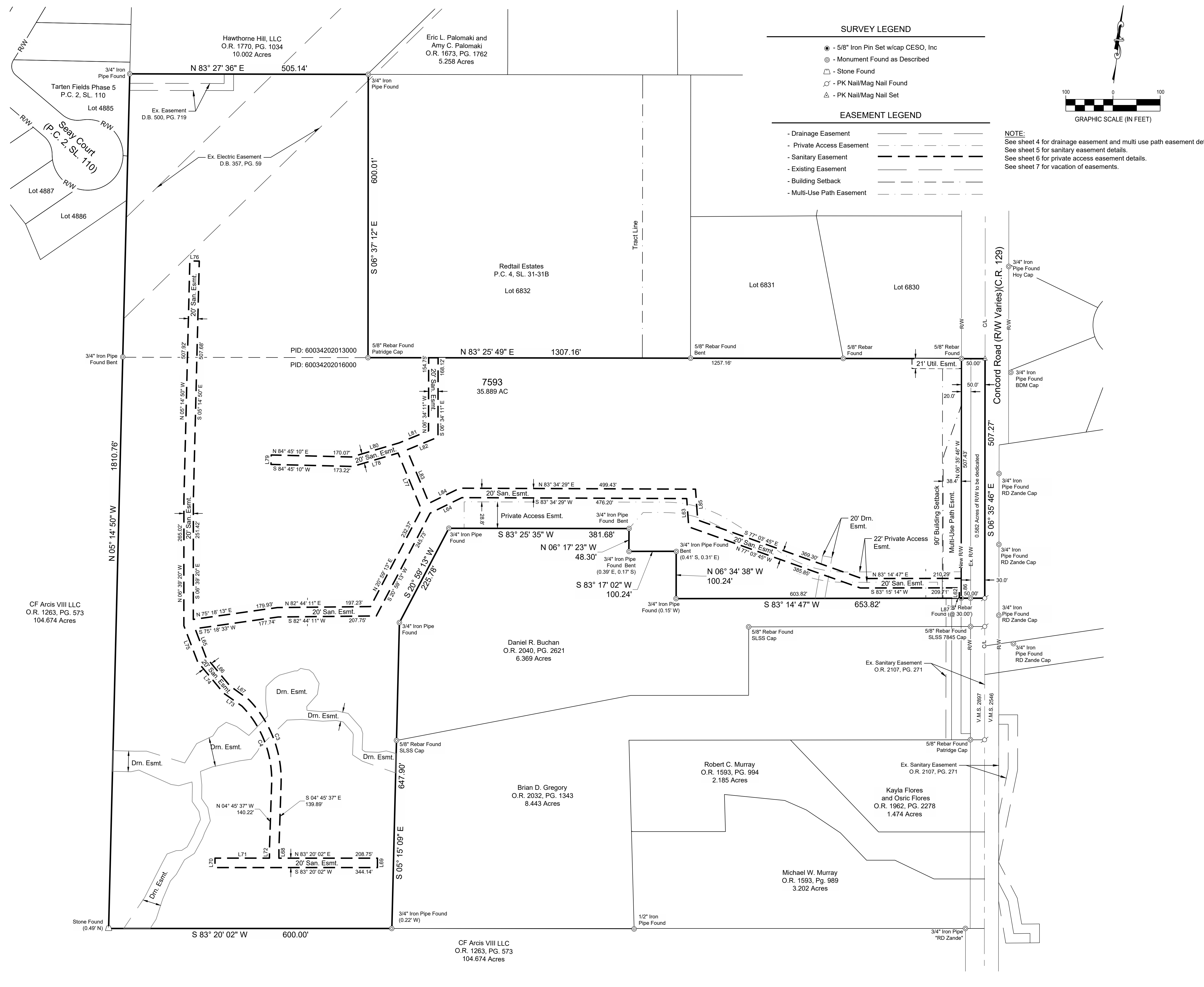
**Courtyards on Concord**  
 State of Ohio, County of Delaware, Township of Concord,  
 Virginia Military Survey No. 2897

Revisions / Submissions

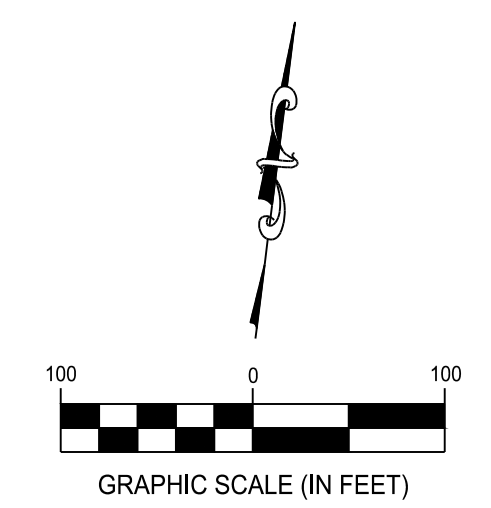
ID	Description	Date

© 2025 CESO, INC.  
 Project Number: 763329  
 Scale: 1"=50'  
 Drawn By: OPG  
 Checked By: ALB/JKH  
 Date: 3/27/2026  
 Issue: N/A

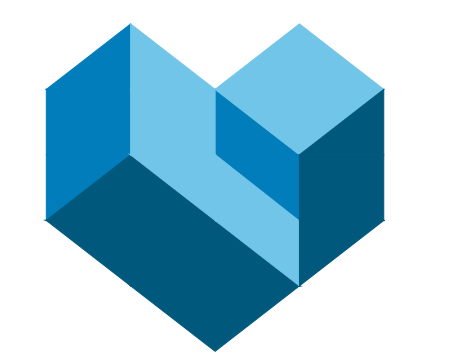
Drawing Title:



- SURVEY LEGEND**
- - 5/8" Iron Pin Set w/cap CESO, Inc
  - ⊙ - Monument Found as Described
  - - Stone Found
  - ⊕ - PK Nail/Mag Nail Found
  - △ - PK Nail/Mag Nail Set
- EASEMENT LEGEND**
- Drainage Easement
  - Private Access Easement
  - Sanitary Easement
  - Existing Easement
  - Building Setback
  - Multi-Use Path Easement



**NOTE:**  
 See sheet 4 for drainage easement and multi use path easement details.  
 See sheet 5 for sanitary easement details.  
 See sheet 6 for private access easement details.  
 See sheet 7 for vacation of easements.



**CESO**  
 WWW.CESOINC.COM

2800 Corporate Exchange Dr., Suite 400  
 Columbus, OH 43231  
 Phone: 614.794.1980 Fax: 614.298.4826

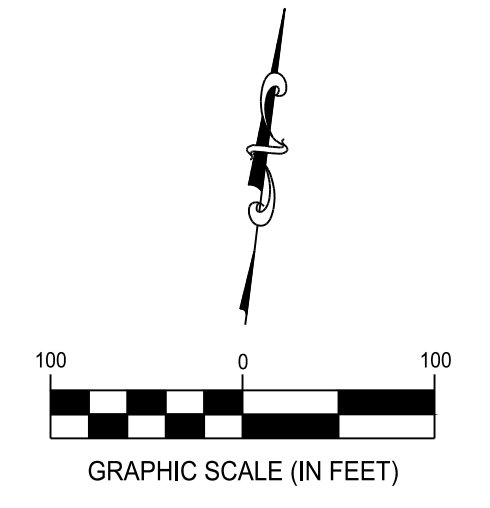
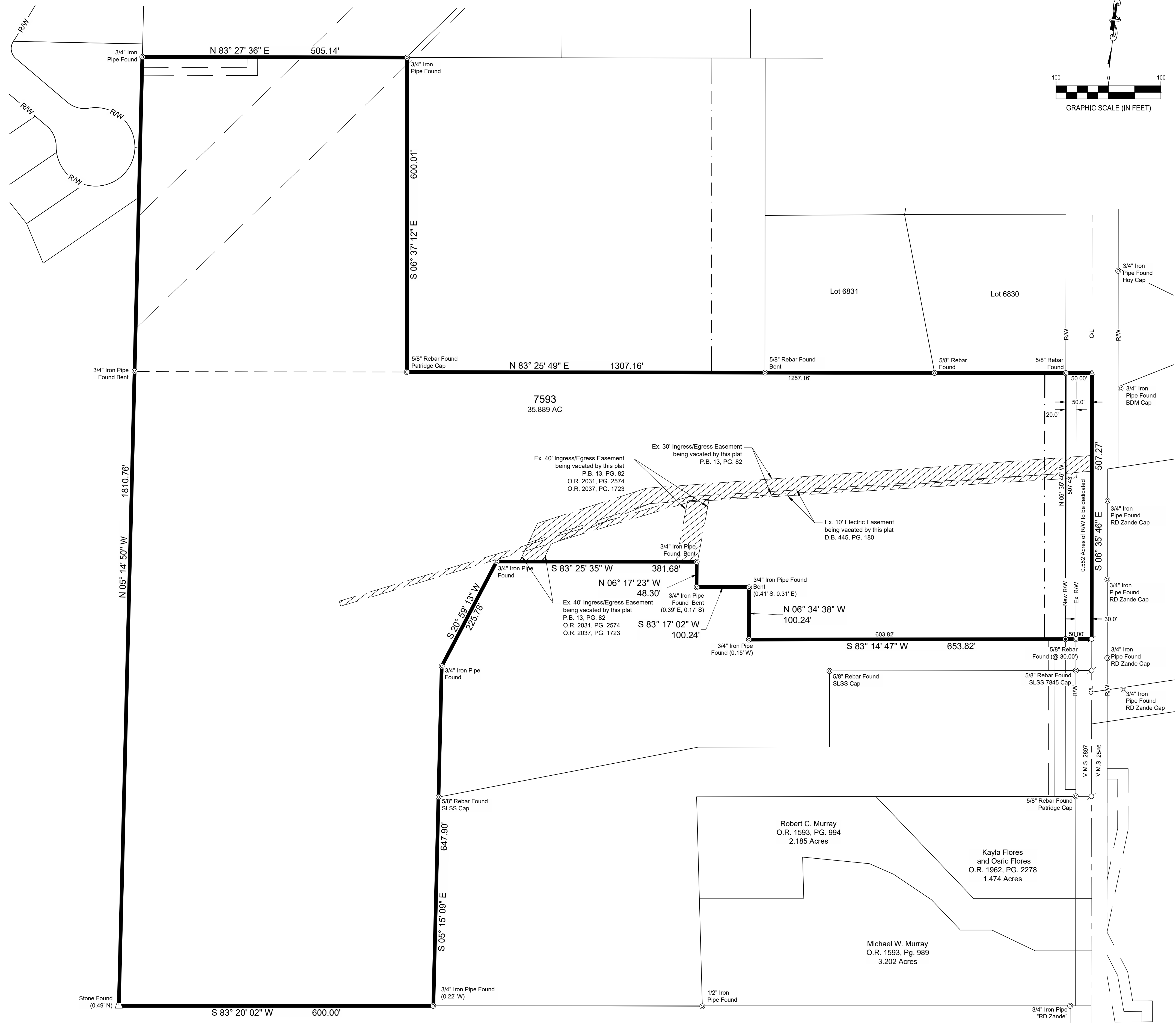
**Courtyards on Concord**  
 State of Ohio, County of Delaware, Township of Concord,  
 Virginia Military Survey No. 2897

Revisions / Submissions

ID	Description	Date

© 2025 CESO, INC.  
 Project Number: 763329  
 Scale: 1"=100'  
 Drawn By: OPG  
 Checked By: ALB/JKH  
 Date: 3/27/2026  
 Issue: N/A





**SURVEY LEGEND**

- - 5/8" Iron Pin Set w/cap CESO, Inc
- ⊙ - Monument Found as Described
- ⬢ - Stone Found
- ⊕ - PK Nail/Mag Nail Found
- ⚠ - PK Nail/Mag Nail Set

**EASEMENT LEGEND**

- Drainage Easement
- Private Access Easement
- Sanitary Easement
- Existing Easement
- Building Setback
- Multi-Use Path Easement

**NOTE:**  
 See sheet 4 for drainage easement and multi use path easement details.  
 See sheet 5 for sanitary easement details.  
 See sheet 6 for private access easement details.  
 See sheet 7 for vacation of easements.

**Courtyards on Concord**  
 State of Ohio, County of Delaware, Township of Concord,  
 Virginia Military Survey No. 2897

Revisions / Submissions

ID	Description	Date

© 2025 CESO, INC.

Project Number: 763329  
 Scale: 1"=100'  
 Drawn By: OPG  
 Checked By: ALB/JKH  
 Date: 3/27/2026  
 Issue: N/A

Drawing Title: