

Delaware County

2025 Trail Assistance Program

The **Trail System Master Plan** recognizes the unique nature of Delaware County and promotes the health and economy of all communities in the County. The Plan strives for a cohesive and consistent trail system connecting local jurisdictions and the County's many wonderful features, including lakes, parks, historic areas, a world-class zoo, and many other community resources.

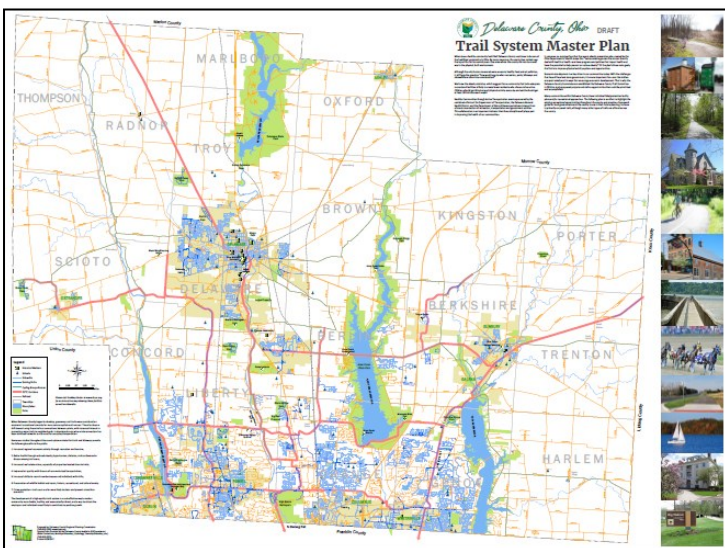


What is the plan?

- Identifies corridors throughout the County that would connect parks, schools, and activities;
- Collects existing trail, sidewalk, and park information;
- Honors existing local plans of individual communities;
- Provides a wall map and online detailed map to promote local support of trail construction.

What is the Trail Assistance Program?

An opportunity for communities and organizations to request funding from the Delaware County Commissioners for trail projects through grant applications. The review process is conducted by the Delaware County Trail Committee on behalf of the Commissioners.



Applications due September 12th, 2025

Applications should be delivered to:

Delaware County Trail Committee
c/o DCRPC
1610 State Route 521
P.O. Box 8006
Delaware, OH 43015

Questions or comments:
smatlack@co.delaware.oh.us

