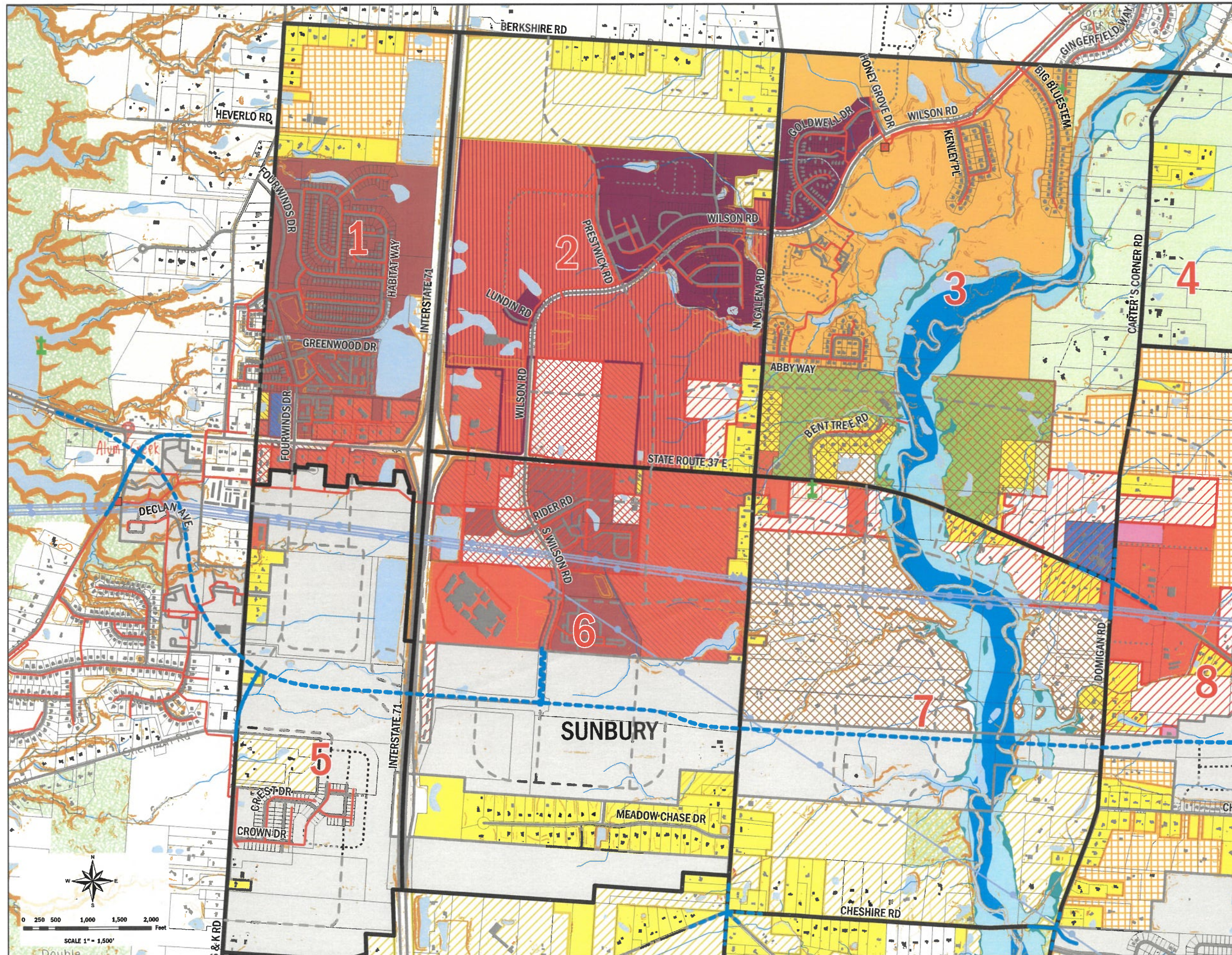


# Berkshire Township

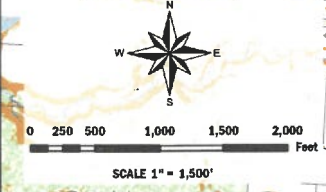
## Comprehensive Land Use Plan 2025

Adopted Date

### Northwest Area



- Township Hall
- Fire Department
- Cemeteries
- Schools
- Local Proposed Roads\*
- Building outlines (2023 data)
- Planning Subareas
- Incorp. Area Boundaries
- Sewer Pump Stations
- Sewer lines
- Power Lines
- Power Poles
- Proposed Subdivision Roads
- Road Centerlines
- Property Lines
- Slope > 20%
- Rivers/Lakes
- Streams
- Wetland (National Wetland Inventory)
- Capital Improvement Projects (DCEO)
  - Engineering
  - Construction
- Floodplains
  - 100-Year Floodplain (Zone AE)
  - 100-Year Floodplain (Zone A)
  - 500-Year Floodplain
  - Floodway
- Proposed Land Use
  - Agricultural Heartland or Single Family at 5-acre or 1.95-acre lots
  - Single Family at 1 unit / 2 acres without sewer or 1.25 units / N.D.A. with centralized sewer
  - Single Family at 1 unit / 2 acres without sewer or 2 units / N.D.A. with centralized sewer
  - Residential at 8 - 12.5 units per acre in accordance with the applicable overlay
  - Planned Commercial and/or Office
  - Planned Industrial
  - Township Hall/Park
- Berkshire Township Zoning
  - Agricultural District (A-1)
  - Farm Residential District (FR-1)
  - Planned Residential District (PRD)
  - Planned Elderly Retirement Residential Community District (PERRC)
  - Planned Recreational District (PRCD)
  - Planned Institutional District (PIND)
  - Planned Commercial & Office District (PCD)
  - Planned Industrial District (PID)
  - Floodplain Regulatory District (FPRD)
  - Planned Mixed Use District Overlay (PMUD Art. 16)
  - Planned Mixed Use District Applied (PMUD Art. 16)
  - 36/37 Planned Mixed Use District (PMUD Art. 17)
  - 36/37 Planned Mixed Use District Applied (PMUD Art. 17)



Prepared by: Delaware County Regional Planning Commission (740-833-2260)  
www.dcrpc.org  
GIS Data Provided by The Delaware County Auditor's GIS Office  
(Topo, Parcel, ROW, Municipal Boundary, Road Centerlines, Hydrology,  
Township Boundary, Floodplains) (740-833-2070)  
(Printed 2/10/2025 with current data)

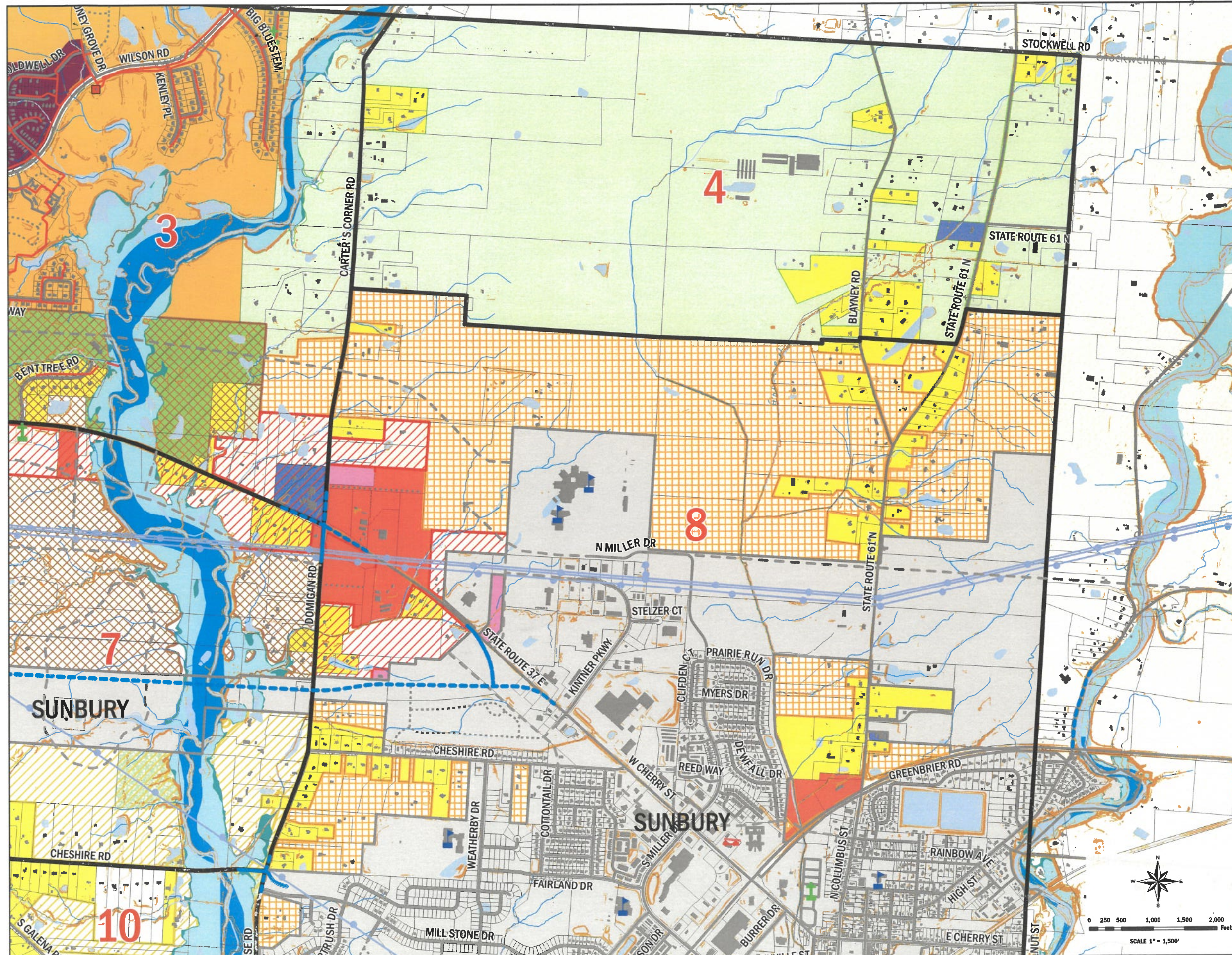
\*Roads shown indicate general corridors and not actual alignments.

# Berkshire Township

## Comprehensive Land Use Plan 2025

Adopted Date

### Northeast Area

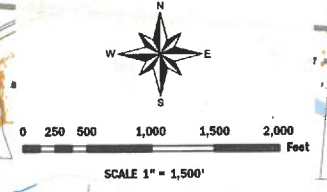


- Township Hall
- Fire Department
- Cemeteries
- Schools
- Local Proposed Roads\*
- Building outlines (2023 data)
- Planning Subareas
- Incorp. Area Boundaries
- Sewer Pump Stations
- Sewer lines
- Power Lines
- Power Poles
- Proposed Subdivision Roads
- Road Centerlines
- Property Lines
- Slope > 20%
- Rivers/Lakes
- Streams
- Wetland (National Wetland Inventory)
- Capital Improvement Projects (DCEO)
  - Engineering
  - Construction
- Floodplains
  - 100-Year Floodplain (Zone AE)
  - 100-Year Floodplain (Zone A)
  - 500-Year Floodplain
  - Floodway
- Proposed Land Use
  - Agricultural Heartland or Single Family at 5-acre or 1.95-acre lots
  - Single Family at 1 unit / 2 acres without sewer or 1.25 units / N.D.A. with centralized sewer
  - Single Family at 1 unit / 2 acres without sewer or 2 units / N.D.A. with centralized sewer
  - Residential at 8 - 12.5 units per acre in accordance with the applicable overlay
  - Planned Commercial and/or Office
  - Planned Industrial
  - Township Hall/Park
- Berkshire Township Zoning
  - Agricultural District (A-1)
  - Farm Residential District (FR-1)
  - Planned Residential District (PRD)
  - Planned Elderly Retirement Residential Community District (PERRC)
  - Planned Recreational District (PRCD)
  - Planned Institutional District (PIND)
  - Planned Commercial & Office District (PCD)
  - Planned Industrial District (PID)
  - Floodplain Regulatory District (FPRD)
  - Planned Mixed Use District Overlay (PMUD Art. 16)
  - Planned Mixed Use District Applied (PMUD Art. 16)
  - 36/37 Planned Mixed Use District (PMUD Art. 17)
  - 36/37 Planned Mixed Use District Applied (PMUD Art. 17)

Prepared by: Delaware County Regional Planning Commission (740-833-2260) [www.dcrpc.org](http://www.dcrpc.org)

GIS Data Provided by The Delaware County Auditor's GIS Office (Topo, Parcel, ROW, Municipal Boundary, Road Centerlines, Hydrology, Township Boundary, Floodplains) (740-833-2070) (Printed 2/10/2025 with current data)

\*Roads shown indicate general corridors and not actual alignments.

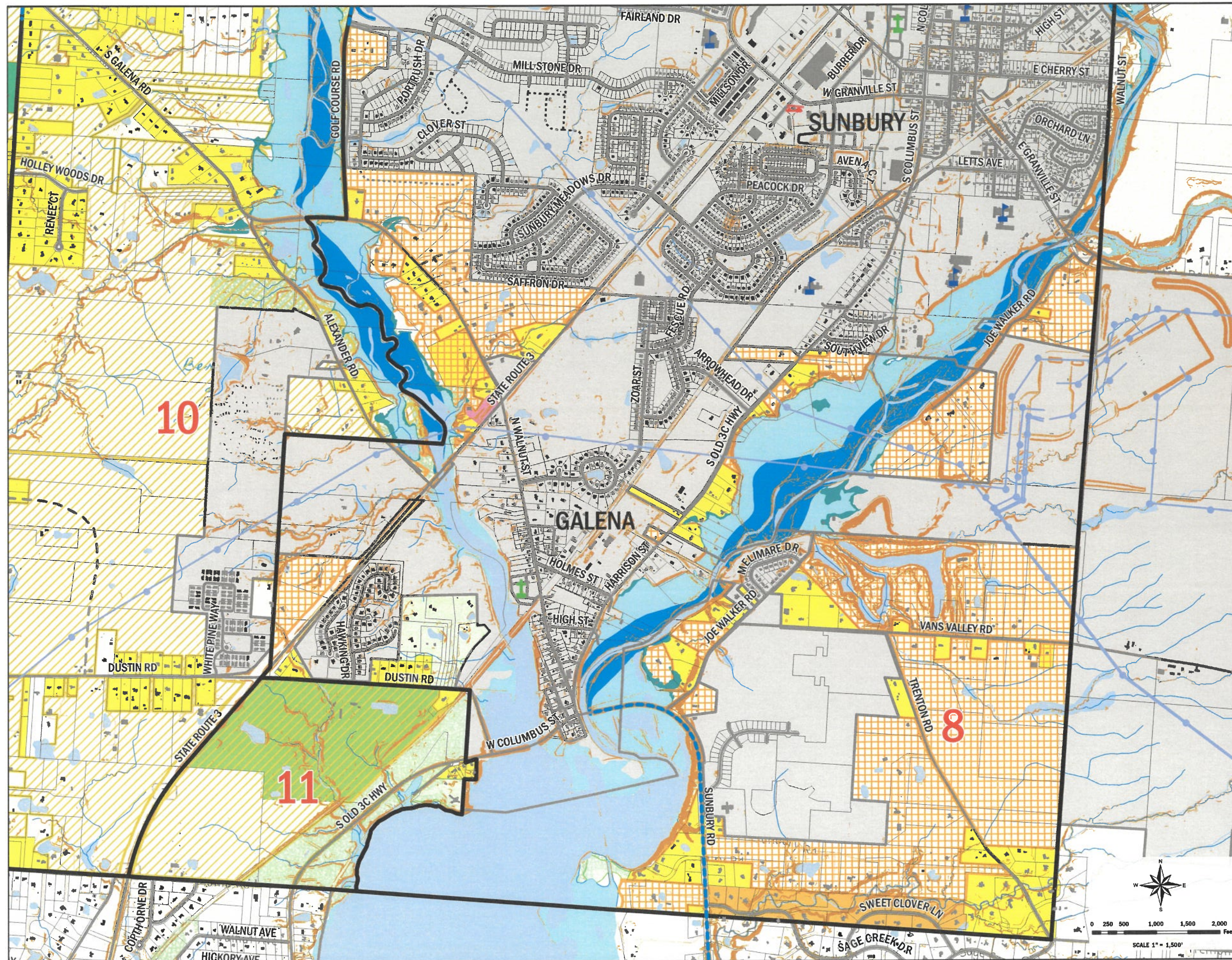


# Berkshire Township

## Comprehensive Land Use Plan 2025

Adopted Date

### Southeast Area

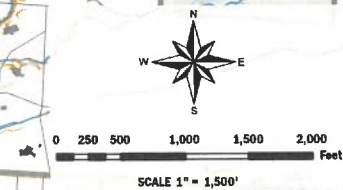


- Township Hall
- Fire Department
- Cemeteries
- Schools
- Local Proposed Roads\*
- Building outlines (2023 data)
- Planning Subareas
- Incorp. Area Boundaries
- Sewer Pump Stations
- Sewer lines
- Power Lines
- Power Poles
- Proposed Subdivision Roads
- Road Centerlines
- Property Lines
- Slope > 20%
- Rivers/Lakes
- Streams
- Wetland (National Wetland Inventory)
- Capital Improvement Projects (DCEO)
- Engineering
- Construction
- Floodplains
  - 100-Year Floodplain (Zone AE)
  - 100-Year Floodplain (Zone A)
  - 500-Year Floodplain
  - Floodway
- Proposed Land Use
  - Agricultural Heartland or Single Family at 5-acre or 1.95-acre lots
  - Single Family at 1 unit / 2 acres without sewer or 1.25 units / N.D.A. with centralized sewer
  - Single Family at 1 unit / 2 acres without sewer or 2 units / N.D.A. with centralized sewer
  - Residential at 8 - 12.5 units per acre in accordance with the applicable overlay
  - Planned Commercial and/or Office
  - Planned Industrial
  - Township Hall/Park
- Berkshire Township Zoning
  - Agricultural District (A-1)
  - Farm Residential District (FR-1)
  - Planned Residential District (PRD)
  - Planned Elderly Retirement Residential Community District (PERRC)
  - Planned Recreational District (PRCD)
  - Planned Institutional District (PIND)
  - Planned Commercial & Office District (PCD)
  - Planned Industrial District (PID)
  - Floodplain Regulatory District (FPRD)
  - Planned Mixed Use District Overlay (PMUD Art. 16)
  - Planned Mixed Use District Applied (PMUD Art. 16)
  - 36/37 Planned Mixed Use District (PMUD Art. 17)
  - 36/37 Planned Mixed Use District Applied (PMUD Art. 17)

Prepared by: Delaware County Regional Planning Commission (740-833-2260) [www.dcrpc.org](http://www.dcrpc.org)

GIS Data Provided by The Delaware County Auditor's GIS Office  
(Topo, Parcel, ROW, Municipal Boundary, Road Centerlines, Hydrology, Township Boundary, Floodplains) (740-833-2070)  
(Printed 2/10/2025 with current data)

\*Roads shown indicate general corridors and not actual alignments.

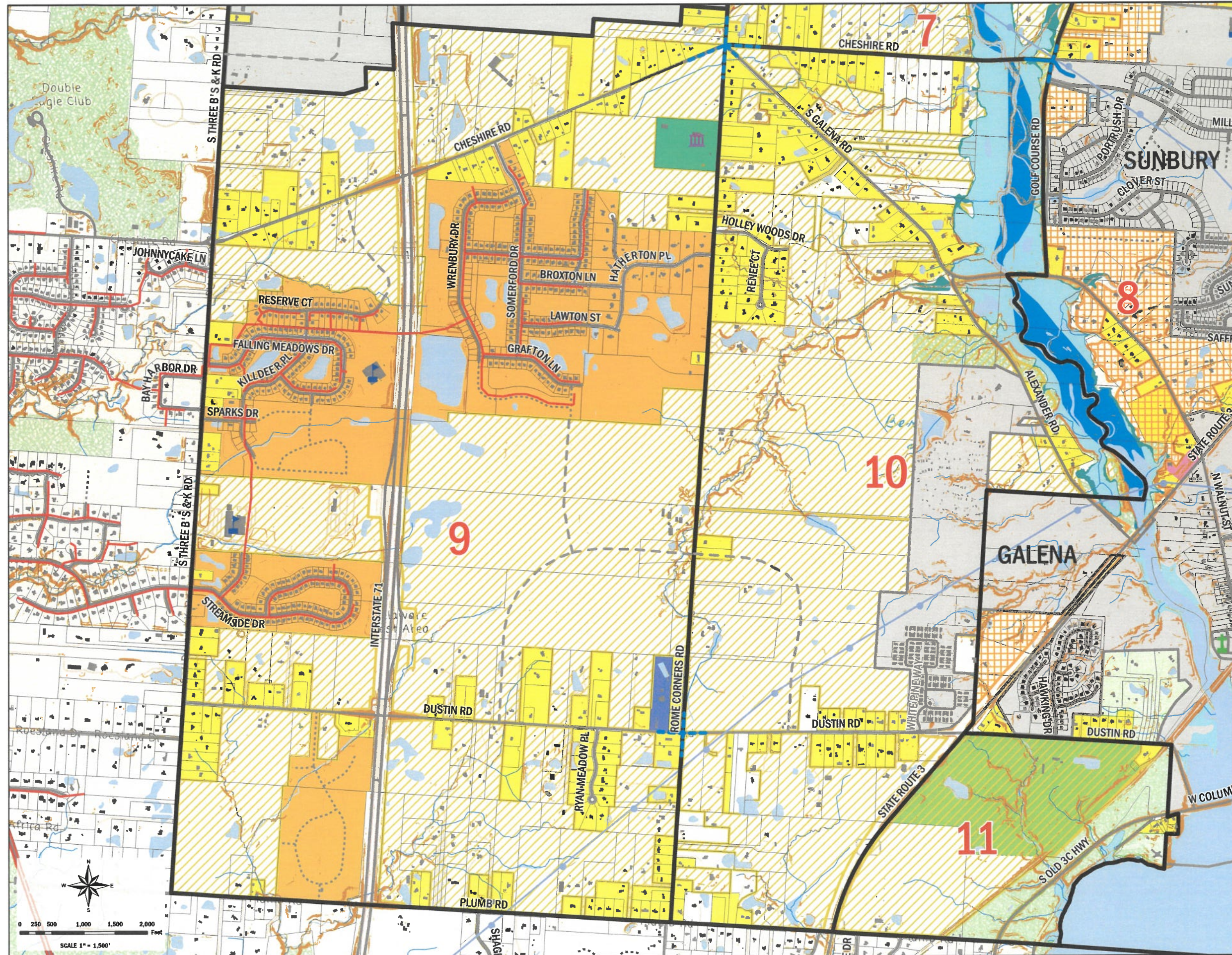


# Berkshire Township

## Comprehensive Land Use Plan 2025

Adopted Date

### Southwest Area



- Township Hall
- Fire Department
- Cemeteries
- Schools
- Local Proposed Roads\*
- Building outlines (2023 data)
- Planning Subareas
- Incorp. Area Boundaries
- Sewer Pump Stations
- Sewer lines
- Power Lines
- Power Poles
- Proposed Subdivision Roads
- Road Centerlines
- Property Lines
- Slope > 20%
- Rivers/Lakes
- Streams
- Wetland (National Wetland Inventory)
- Capital Improvement Projects (DCEO)
  - Engineering
  - Construction
- Floodplains
  - 100-Year Floodplain (Zone AE)
  - 100-Year Floodplain (Zone A)
  - 500-Year Floodplain
  - Floodway
- Proposed Land Use
  - Agricultural Heartland or Single Family at 5-acre or 1.95-acre lots
  - Single Family at 1 unit / 2 acres without sewer or 1.25 units / N.D.A. with centralized sewer
  - Single Family at 1 unit / 2 acres without sewer or 2 units / N.D.A. with centralized sewer
  - Residential at 8 - 12.5 units per acre in accordance with the applicable overlay
  - Planned Commercial and/or Office
  - Planned Industrial
  - Township Hall/Park
- Berkshire Township Zoning
  - Agricultural District (A-1)
  - Farm Residential District (FR-1)
  - Planned Residential District (PRD)
  - Planned Elderly Retirement Residential Community District (PERRC)
  - Planned Recreational District (PRCD)
  - Planned Institutional District (PIND)
  - Planned Commercial & Office District (PCD)
  - Planned Industrial District (PID)
  - Floodplain Regulatory District (FPRD)
  - Planned Mixed Use District Overlay (PMUD Art. 16)
  - Planned Mixed Use District Applied (PMUD Art. 16)
  - 36/37 Planned Mixed Use District (PMUD Art. 17)
  - 36/37 Planned Mixed Use District Applied (PMUD Art. 17)

Prepared by: Delaware County Regional Planning Commission (740-833-2260)  
www.dcrpc.org  
GIS Data Provided by The Delaware County Auditor's GIS Office  
(Topo, Parcel, ROW, Municipal Boundary, Road Centerlines, Hydrology, Township Boundary, Floodplains) (740-833-2070)  
(Printed 2/10/2025 with current data)

\*Roads shown indicate general corridors and not actual alignments.

