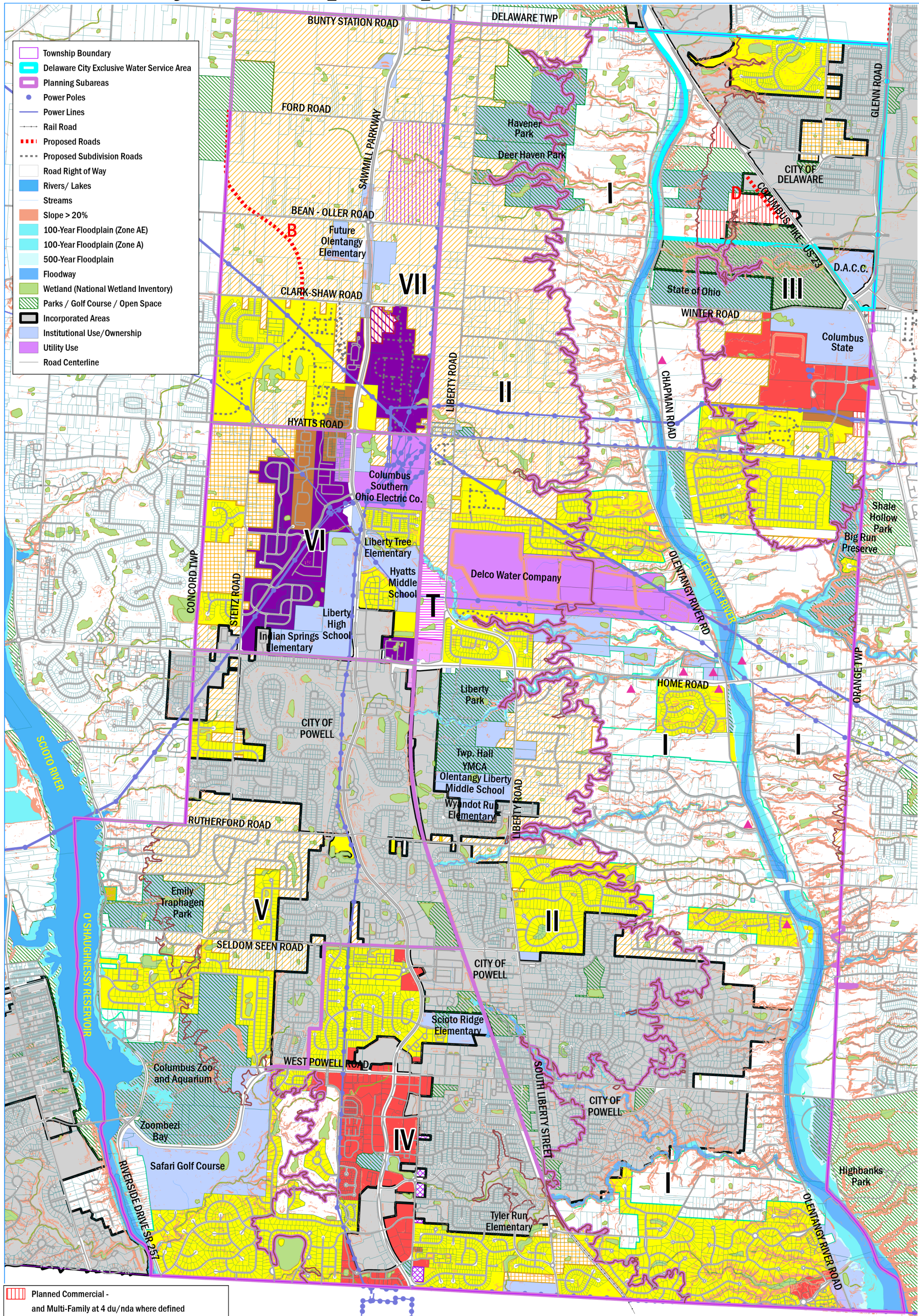


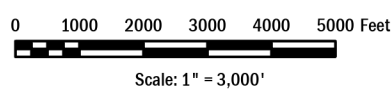
Liberty Township Comprehensive Plan (2040) Draft



- Township Boundary
- Delaware City Exclusive Water Service Area
- Planning Subareas
- Power Poles
- Power Lines
- Rail Road
- Proposed Roads
- Proposed Subdivision Roads
- Road Right of Way
- Rivers/ Lakes
- Streams
- Slope > 20%
- 100-Year Floodplain (Zone AE)
- 100-Year Floodplain (Zone A)
- 500-Year Floodplain
- Floodway
- Wetland (National Wetland Inventory)
- Parks / Golf Course / Open Space
- Incorporated Areas
- Institutional Use/Ownership
- Utility Use
- Road Centerline

- Planned Commercial - and Multi-Family at 4 du/nda where defined
- Light Industrial/Advanced Manufacturing or Residential
- Planned Office or Residential at 1.5 du per N.D.A.
- Residential at 1.5 du per N.D.A. with Sanitary Sewer, or 1 du per N.D.A. without Sewer
- Residential at 1.25 du per N.D.A. with Sanitary Sewer, or 1 du per N.D.A. without Sewer
- Olentangy and Scioto Watershed Corridors Residential at 1 du per N.D.A.
- Transitional Uses

- Farm Residence District (FR-1)
- Neighborhood Apartment District (R-3)
- Planned Residence District (PR)
- Planned Overlay District (POD 18 D)
- Planned Overlay District applied
- Planned Multi-Family Residence District (PMFR)
- Planned Residence Conservation District (PRC)
- Neighborhood Retail District (C-2)
- Planned Elderly or Retirement Residential Community (PERRC)
- Planned Commercial District (PC)
- Industrial District (I)
- Planned Industrial District (PI)



Prepared By: Delaware County Regional Planning Commission (740-833-2260)
 GIS Data Provided by The Delaware County Auditor's Office
 (Parcel, ROW, Road Centerlines, Hydrology, Municipal Boundary) (740-833-2070)
 Printed: 10/24/2024