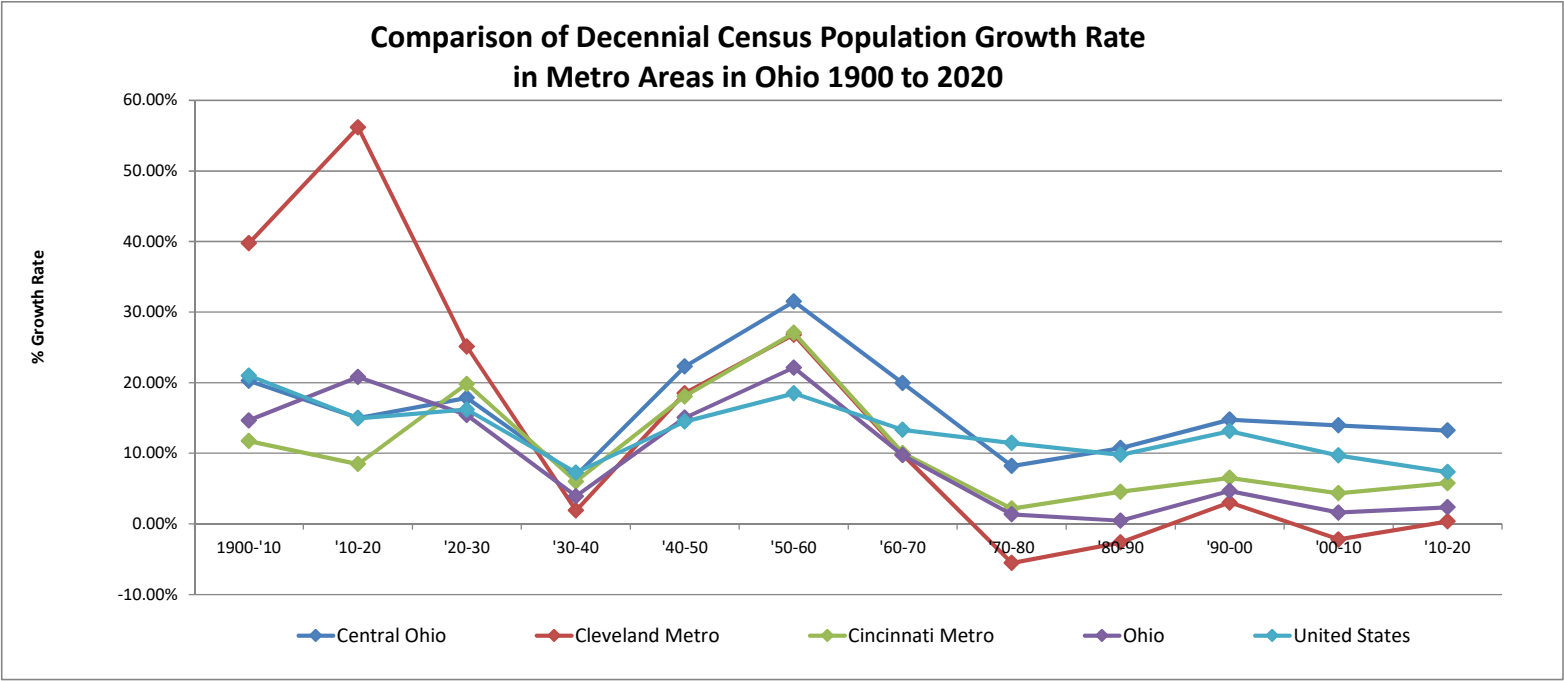


# Population from 1900 to 2020

(Based on U.S. Census Bureau Decennial Census)



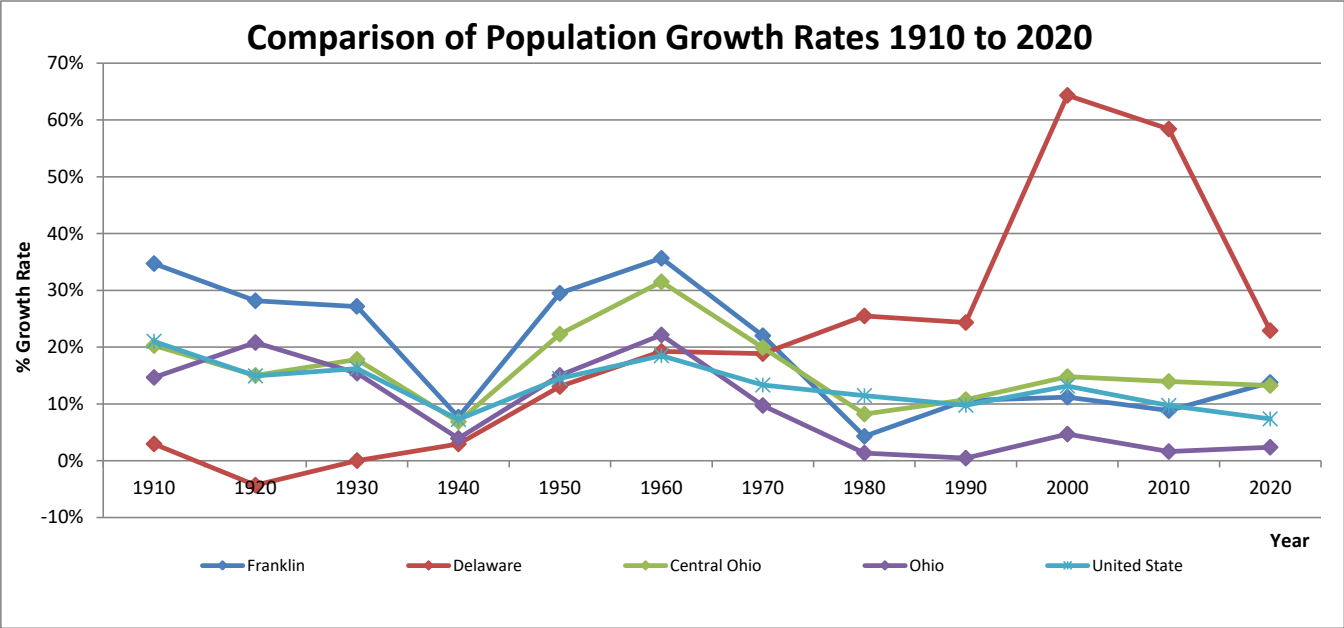
## Population Information in Metro Areas in Ohio

(Source: U.S. Census Bureau Decennial Census)

Area Name	1900	1910	1920	1930	1940	# of Population		1970	1980	1990	2000	2010	2020	Avg. Annual G.R. ('00-'10)	Avg. Annual G.R. ('10-'20)
Central Ohio	342,138	411,471	473,242	557,726	595,973	728,802	958,385	1,149,432	1,243,833	1,377,419	1,581,066	1,801,709	2,040,518	1.31%	1.25%
Cleveland Metro	653,320	913,217	1,426,211	1,784,239	1,818,189	2,154,722	2,732,350	3,000,276	2,834,062	2,759,823	2,843,103	2,780,440	2,790,470	-0.22%	0.04%
Cincinnati Metro	523,543	585,051	634,710	760,574	806,239	951,842	1,209,438	1,330,875	1,359,770	1,421,803	1,514,470	1,580,560	1,671,934	0.43%	0.56%
Ohio	4,157,545	4,767,121	5,759,394	6,646,697	6,907,612	7,946,627	9,706,397	10,652,017	10,797,630	10,847,115	11,353,140	11,536,504	11,808,848	0.16%	0.23%
United States	76,212,168	92,228,496	106,021,537	123,202,624	132,164,569	151,325,798	179,323,175	203,211,926	226,545,805	248,709,873	281,421,906	308,745,538	331,449,281	0.93%	0.71%

# Population from 1900 to 2020

(Based on U.S. Census Bureau)



## Growth Rates in Central Ohio

(Source: US Census Bureau Population Estimates)

Cumulative Estimates of the Components of Resident Population Change from Census 2020 (4/2020) to 7/1/2023											
Area Name	2020 Census	Growth Rate (4/2020 - 7/2023)	Total Population Change <sup>1</sup>	Vital Events			Net Migration			July 1, 2020	July 1, 2023
				Natural Change	Births	Deaths	Total	International <sup>2</sup>	Domestic		
Franklin	1,323,807	0.17%	2,256	18,738	56,374	37,636	-16,294	20,391	-36,685	1,324,441	1,326,063
Delaware	214,124	8.18%	17,512	2,072	6,946	4,874	15,555	1,557	13,998	215,166	231,636
Fairfield	158,921	4.05%	6,439	-67	5,518	5,585	6,535	603	5,932	159,448	165,360
Licking	178,519	2.62%	4,682	-434	6,157	6,591	4,983	391	4,592	178,784	183,201
Union	62,784	10.92%	6,853	662	2,274	1,612	6,231	220	6,011	63,085	69,637
Pickaway	58,539	4.35%	2,547	-358	2,026	2,384	2,816	33	2,783	58,656	61,086
Madison	43,824	1.78%	778	-193	1,424	1,617	885	113	772	43,849	44,602
Central Ohio	2,040,518	2.01%	41,067	20,420	80,719	60,299	20,711	23,308	-2,597	2,043,429	2,081,585
Ohio	11,799,448	-0.11%	-13,513	-42,708	418,233	460,941	26,900	61,616	-34,716	11,798,292	11,785,935
United States	331,449,520	1.05%	3,465,375	915,797	11,811,192	10,895,395	2,534,150	2,534,150	(X)	331,526,933	334,914,895

<sup>1</sup> Total population change includes a residual. This residual represents the change in population that cannot be attributed to any specific demographic component. See Population Estimates Terms and Definitions at <http://www.census.gov/popest/about/terms.html>.

<sup>2</sup> Net international migration includes the international migration of both native and foreign-born populations. Specifically, it includes: (a) the net international migration of the foreign born, (b) the net migration between the United States and Puerto Rico, (c) the net migration of natives to and from the United States, and (d) the net movement of the Armed Forces population between the United States and overseas.