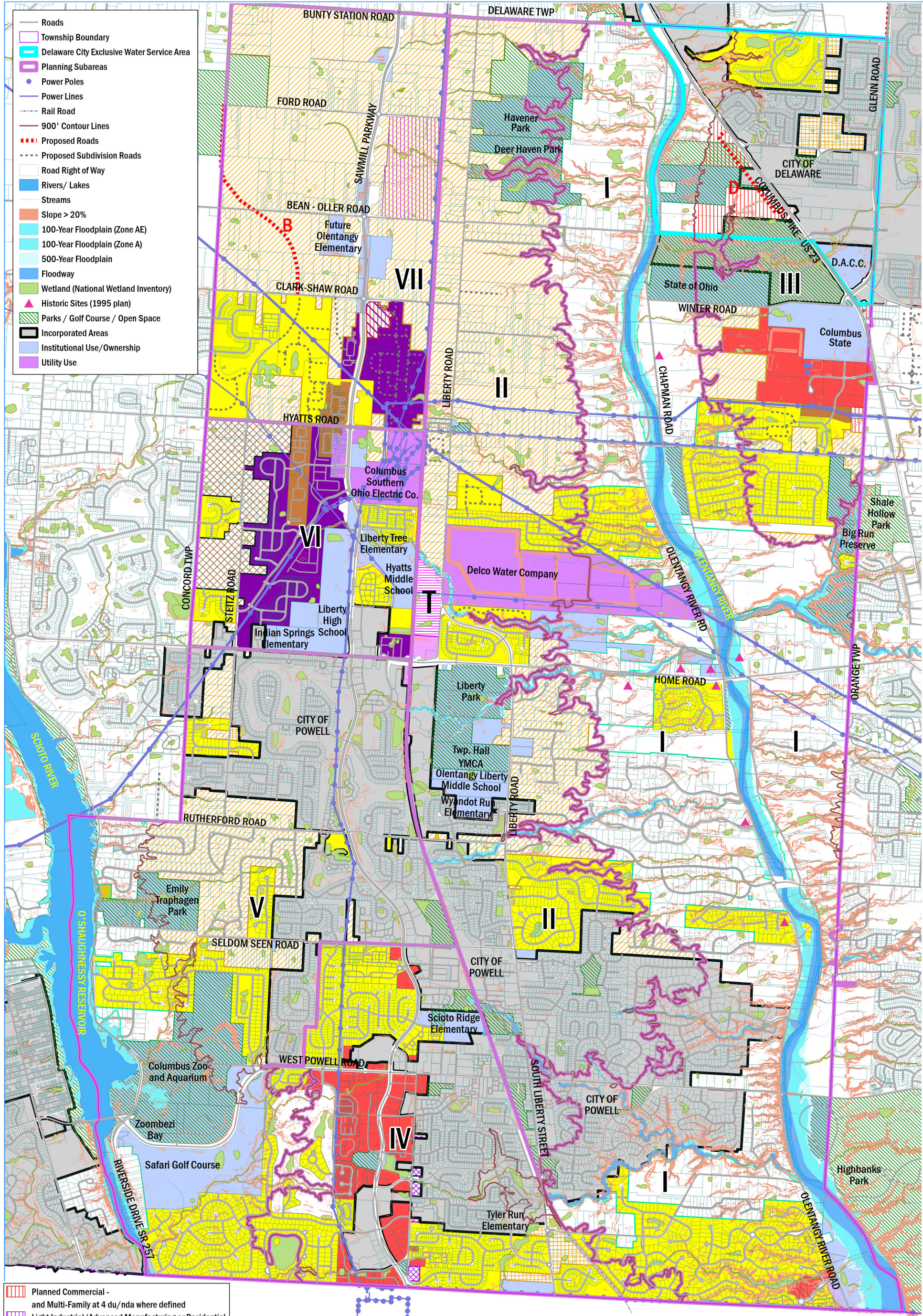


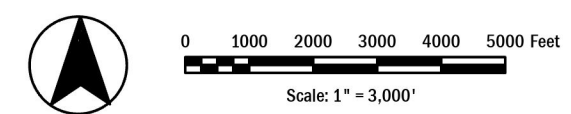
# Liberty Township Comprehensive Plan (2040) Draft



- Roads
- ▭ Township Boundary
- ▭ Delaware City Exclusive Water Service Area
- ▭ Planning Subareas
- Power Poles
- Power Lines
- Rail Road
- 900' Contour Lines
- ▭ Proposed Roads
- ▭ Proposed Subdivision Roads
- ▭ Road Right of Way
- ▭ Rivers/ Lakes
- ▭ Streams
- ▭ Slope > 20%
- ▭ 100-Year Floodplain (Zone AE)
- ▭ 100-Year Floodplain (Zone A)
- ▭ 500-Year Floodplain
- ▭ Floodway
- ▭ Wetland (National Wetland Inventory)
- ▭ Historic Sites (1995 plan)
- ▭ Parks / Golf Course / Open Space
- ▭ Incorporated Areas
- ▭ Institutional Use/Ownership
- ▭ Utility Use

- ▭ Planned Commercial - and Multi-Family at 4 du/nda where defined
- ▭ Light Industrial/Advanced Manufacturing or Residential Planned Office or Residential at 1.5 du per N.D.A.
- ▭ Residential at 1.85 du per N.D.A. with Sanitary Sewer, or 1 du per N.D.A. without Sewer
- ▭ Residential at 1.5 du per N.D.A. with Sanitary Sewer, or 1 du per N.D.A. without Sewer
- ▭ Residential at 1.25 du per N.D.A. with Sanitary Sewer, or 1 du per N.D.A. without Sewer
- ▭ Olentangy and Scioto Watershed Corridors Residential at 1 du per N.D.A.
- ▭ Transitional Uses

- ▭ Farm Residence District (FR-1)
- ▭ Neighborhood Apartment District (R-3)
- ▭ Planned Residence District (PR)
- ▭ Planned Overlay District (POD 18 D)
- ▭ Planned Overlay District applied
- ▭ Planned Multi-Family Residence District (PMFR)
- ▭ Planned Residence Conservation District (PRC)
- ▭ Neighborhood Retail District (C-2)
- ▭ Planned Elderly or Retirement Residential Community (PERRC)
- ▭ Planned Commercial District (PC)
- ▭ Industrial District (I)
- ▭ Planned Industrial District (PI)



Prepared By: Delaware County Regional Planning Commission (740-833-2260)  
 GIS Data Provided by The Delaware County Auditor's Office  
 (Parcel, ROW, Road Centerlines, Hydrology, Municipal Boundary) (740-833-2070)  
 Printed: 6/24/2024