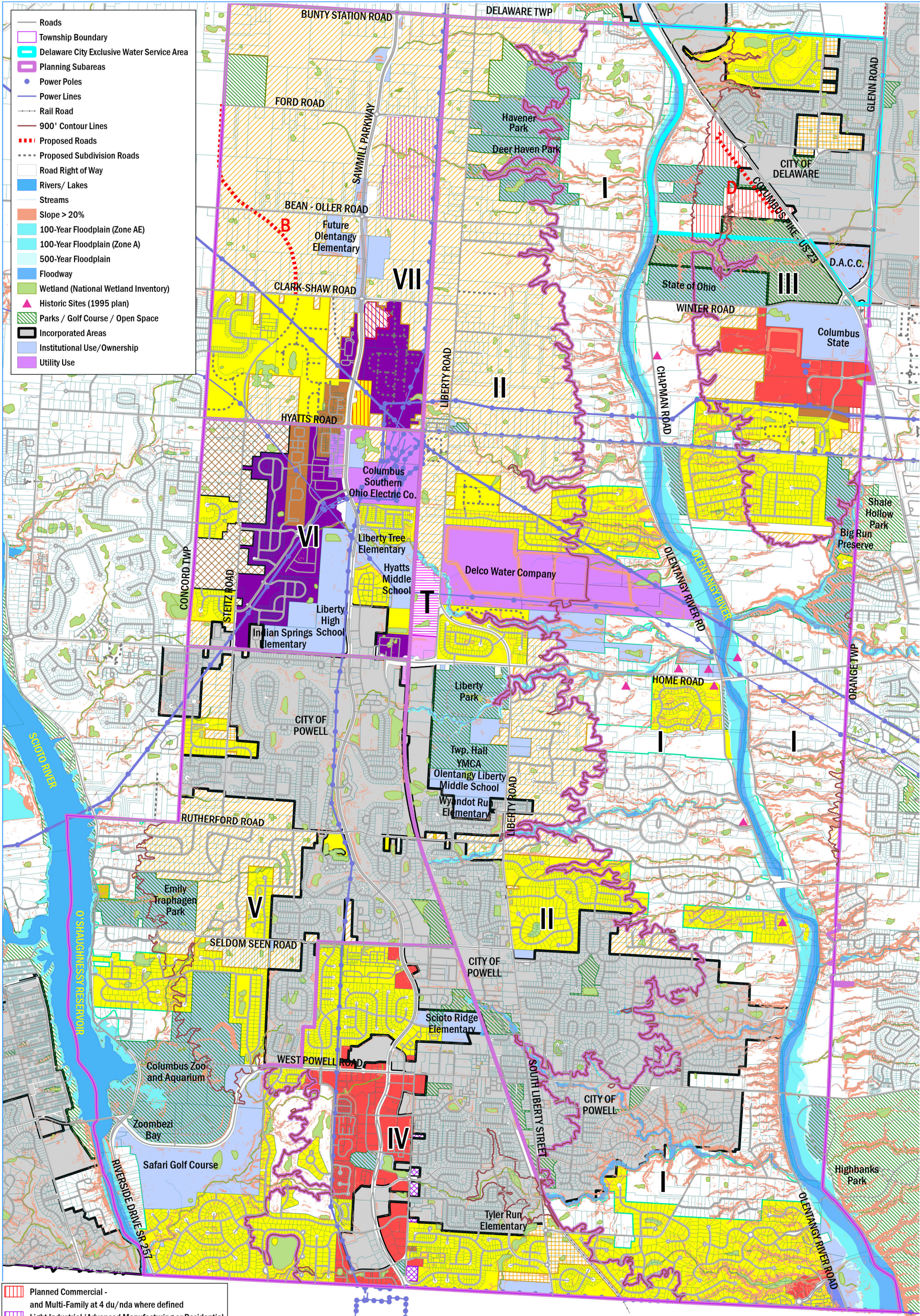


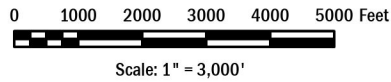
Liberty Township Comprehensive Plan (2040) Draft



- Roads
- Township Boundary
- Delaware City Exclusive Water Service Area
- Planning Subareas
- Power Poles
- Power Lines
- Rail Road
- 900' Contour Lines
- Proposed Roads
- Proposed Subdivision Roads
- Road Right of Way
- Rivers/ Lakes
- Streams
- Slope > 20%
- 100-Year Floodplain (Zone AE)
- 100-Year Floodplain (Zone A)
- 500-Year Floodplain
- Floodway
- Wetland (National Wetland Inventory)
- Historic Sites (1995 plan)
- Parks / Golf Course / Open Space
- Incorporated Areas
- Institutional Use/Ownership
- Utility Use

- Planned Commercial - and Multi-Family at 4 du/nda where defined
- Light Industrial/Advanced Manufacturing or Residential Planned Office or Residential at 1.5 du per N.D.A.
- Residential at 1.85 du per N.D.A. with Sanitary Sewer, or 1 du per N.D.A. without Sewer
- Residential at 1.5 du per N.D.A. with Sanitary Sewer, or 1 du per N.D.A. without Sewer
- Residential at 1.25 du per N.D.A. with Sanitary Sewer, or 1 du per N.D.A. without Sewer
- Olentangy and Scioto Watershed Corridors Residential at 1 du per N.D.A.
- Transitional Uses

- | | |
|--|---|
| Farm Residence District (FR-1) | Neighborhood Retail District (C-2) |
| Neighborhood Apartment District (R-3) | Planned Elderly or Retirement Residential Community (PERRC) |
| Planned Residence District (PR) | Planned Commercial District (PC) |
| Planned Overlay District (POD 18 D) | Industrial District (I) |
| Planned Overlay District applied | Planned Industrial District (PI) |
| Planned Multi-Family Residence District (PMFR) | |
| Planned Residence Conservation District (PRC) | |



Prepared By: Delaware County Regional Planning Commission (740-833-2260)
GIS Data Provided by The Delaware County Auditor's Office
(Parcel, ROW, Road Centerlines, Hydrology, Municipal Boundary) (740-833-2070)
Printed: 12/13/2023