

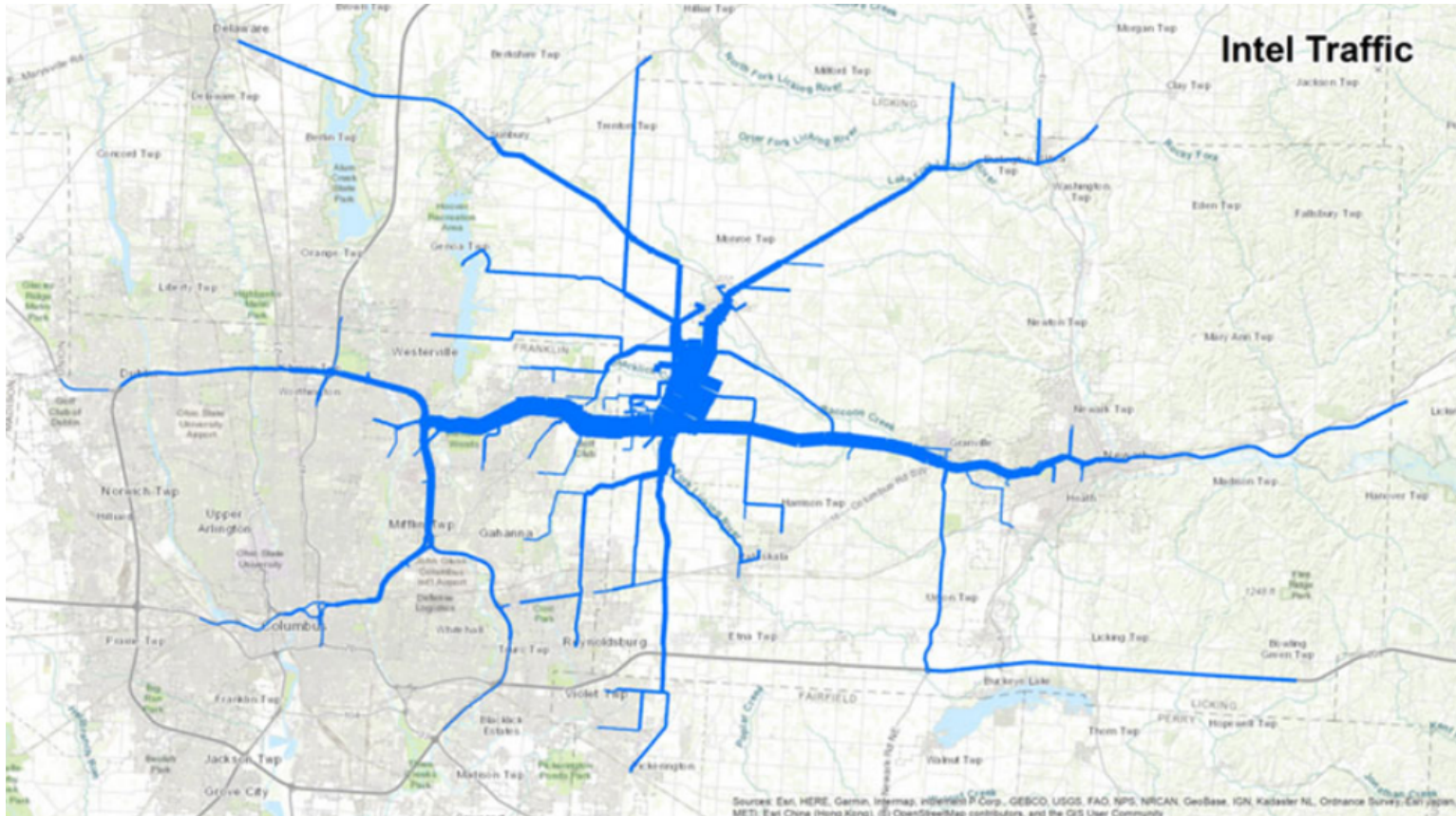
DELAWARE COUNTY ODOT BRIEFING• NOVEMBER 28, 2022



AGENDA

- Introductions
- Silicon Heartland Study
- Short-Term Project Updates
- Long-Term Project Updates
- Discussion

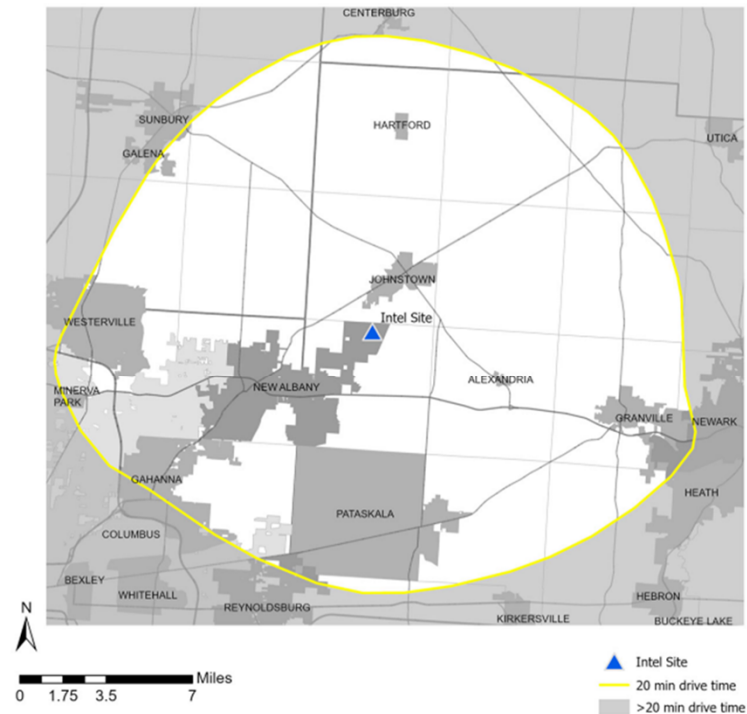
TRAFFIC FORECAST



SILICON HEARTLAND STUDY

Jurisdictions Within 20 Minutes

- Cities
 - New Albany
 - Pataskala – 4.4 mi.
 - Columbus – 5.4 mi.
 - Johnstown – 5.9 mi.
 - Gahanna – 6.7 mi.
 - Westerville – 8.3 mi.
 - Reynoldsburg – 9.9 mi.
- Townships
 - Jersey (LIC)
 - Monroe (LIC) - 2.7 mi.
 - Plain (FRA) - 3.9 mi.
 - Harlem (DEL) - 4.8 mi.
 - Jefferson (FRA) - 5.3 mi.
 - St. Albans (LIC) - 5.8 mi.
 - Liberty (LIC) - 6.2 mi.
 - Harrison (LIC) 7.9 mi.
 - Mckean (LIC) 8.2 mi.
 - Blendon (FRA) 8.3 mi.
 - Hartford (LIC) - 8.3 mi.
 - Mifflin (FRA) - 8.9 mi.
 - Trenton (DEL) - 9.5 mi.
 - Bennington (LIC) - 9.6 mi.
 - Truro (FRA) - 10.8 mi.
 - Etna (LIC) - 12.1 mi.
 - Burlington (LIC) - 13.8 mi.
 - Berkshire (DEL) - 13.9 mi.
 - Union (LIC) 14 mi.
 - Granville (LIC) 14.2 mi.
- Villages
 - Hartford – 8.2 mi.
 - Alexandria – 9.3 mi.
 - Minerva Park – 12.4 mi.
 - Granville – 13.3 mi.
 - Sunbury – 14.5 mi.
 - Centerburg – 15.4 mi.
 - Galena – 15.7 mi.

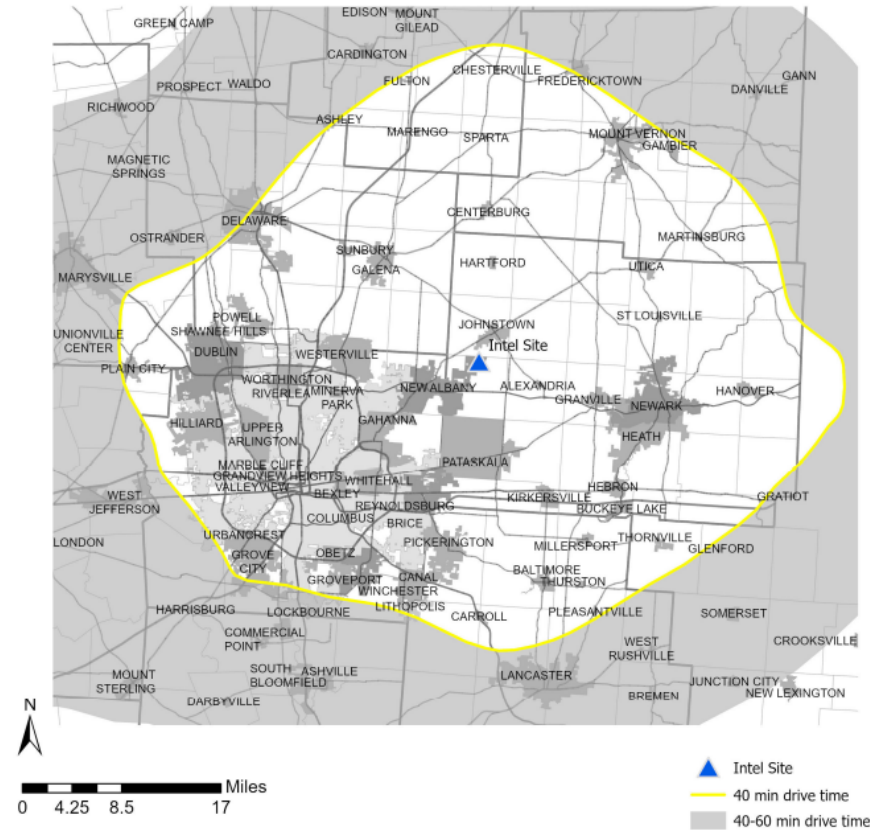


SILICON HEARTLAND STUDY

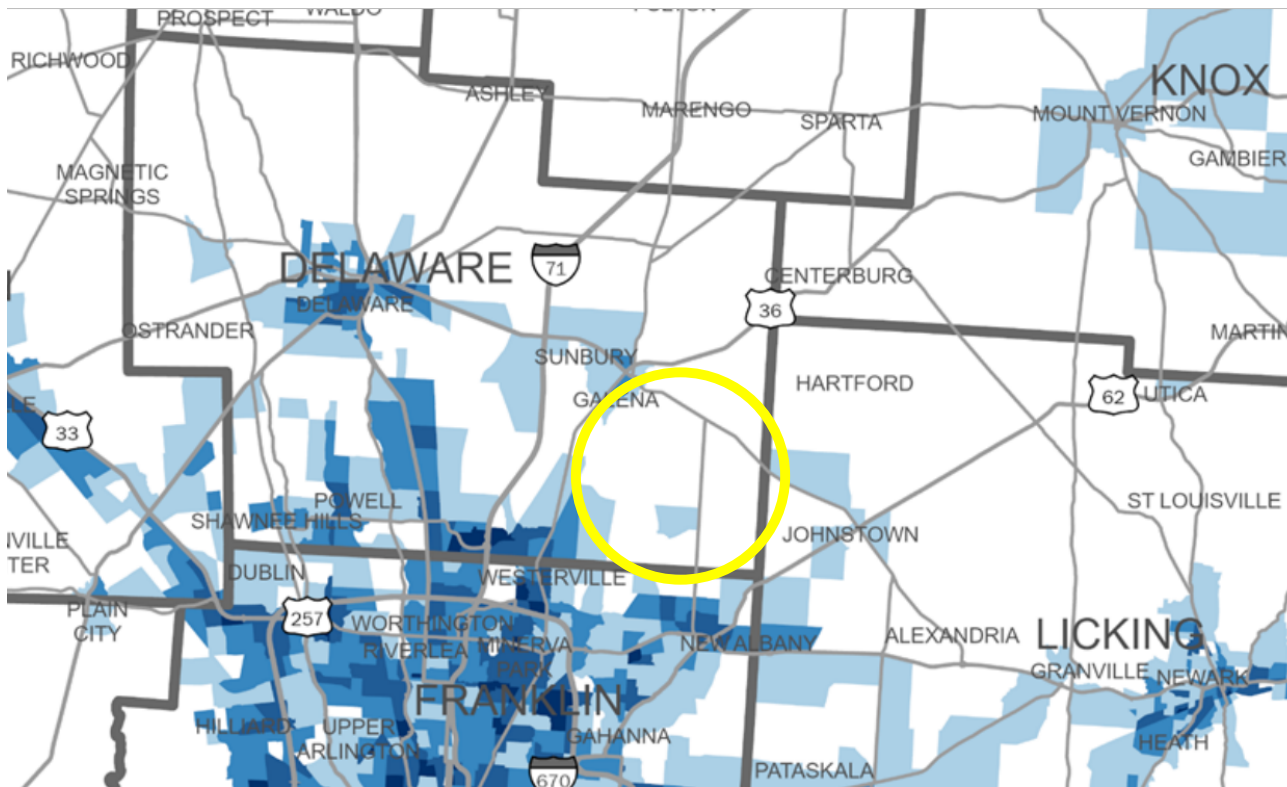
Jurisdictions Within 40 Minutes

Touches 6 additional counties

- 15 additional Cities
- 26 additional Villages
- 78 additional townships



FORECAST GROWTH



Jobs Growth 2020-2050

MORPC
Metropolitan
Transportation
Plan

As projected in
previous regional
plans

Jobs Growth per Square Mile

Below 10

10 - 125

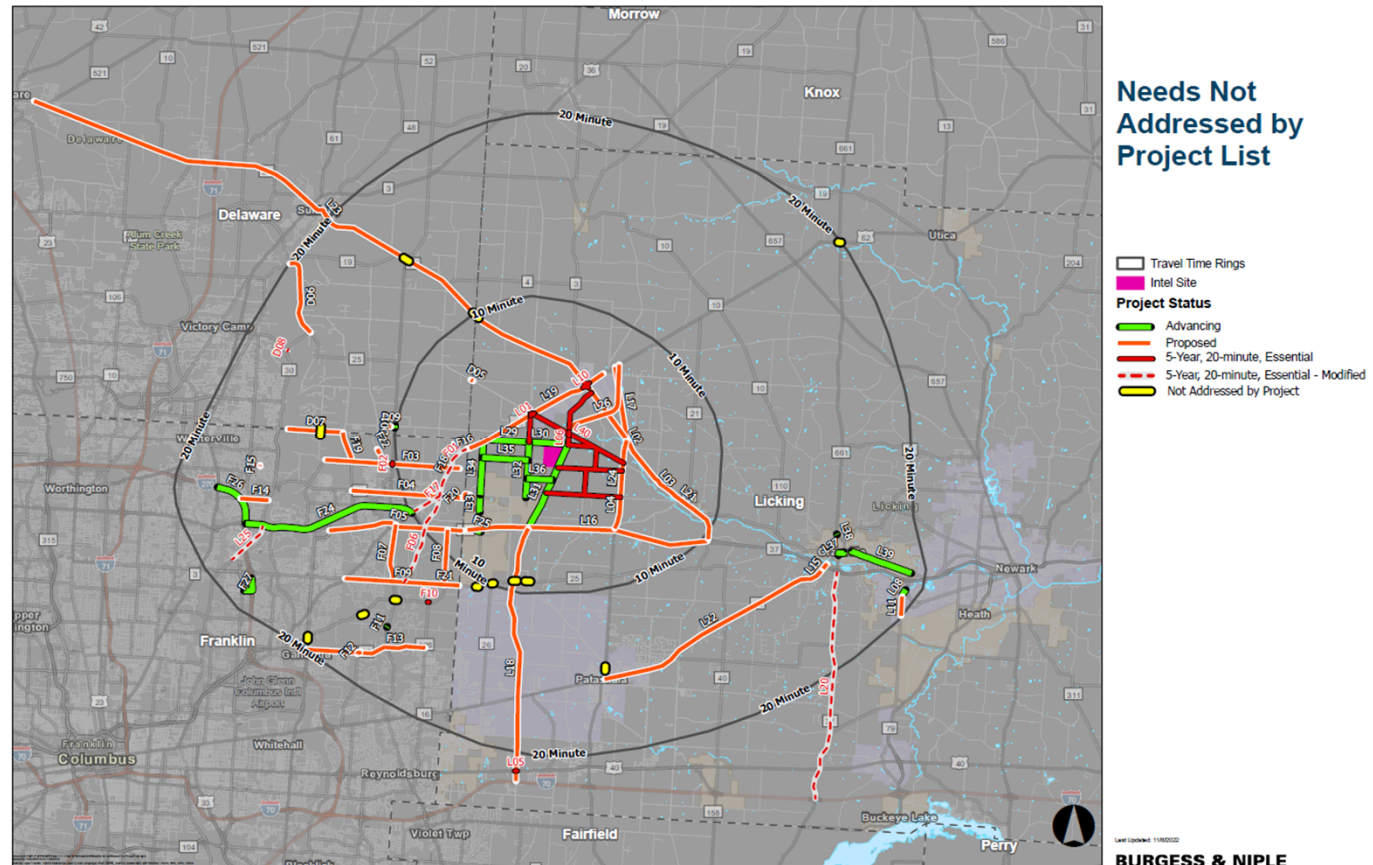
125 - 500

500 - 2500

More than 2500

DRAFT RECOMMENDATIONS

- Total 17 projects estimated at \$88M
- Delaware County Projects
 - Sunbury/Big Walnut Intersection
 - Duncan Plains/County line intersection



SHORT-TERM PROJECTS

- Roundabout at SR 605 & Fancher
- Turn Lanes at U.S. 36 & North Galena
- Signal Coordination Funding for Sunbury
- SR 161 Widening from I-270 to U.S. 62

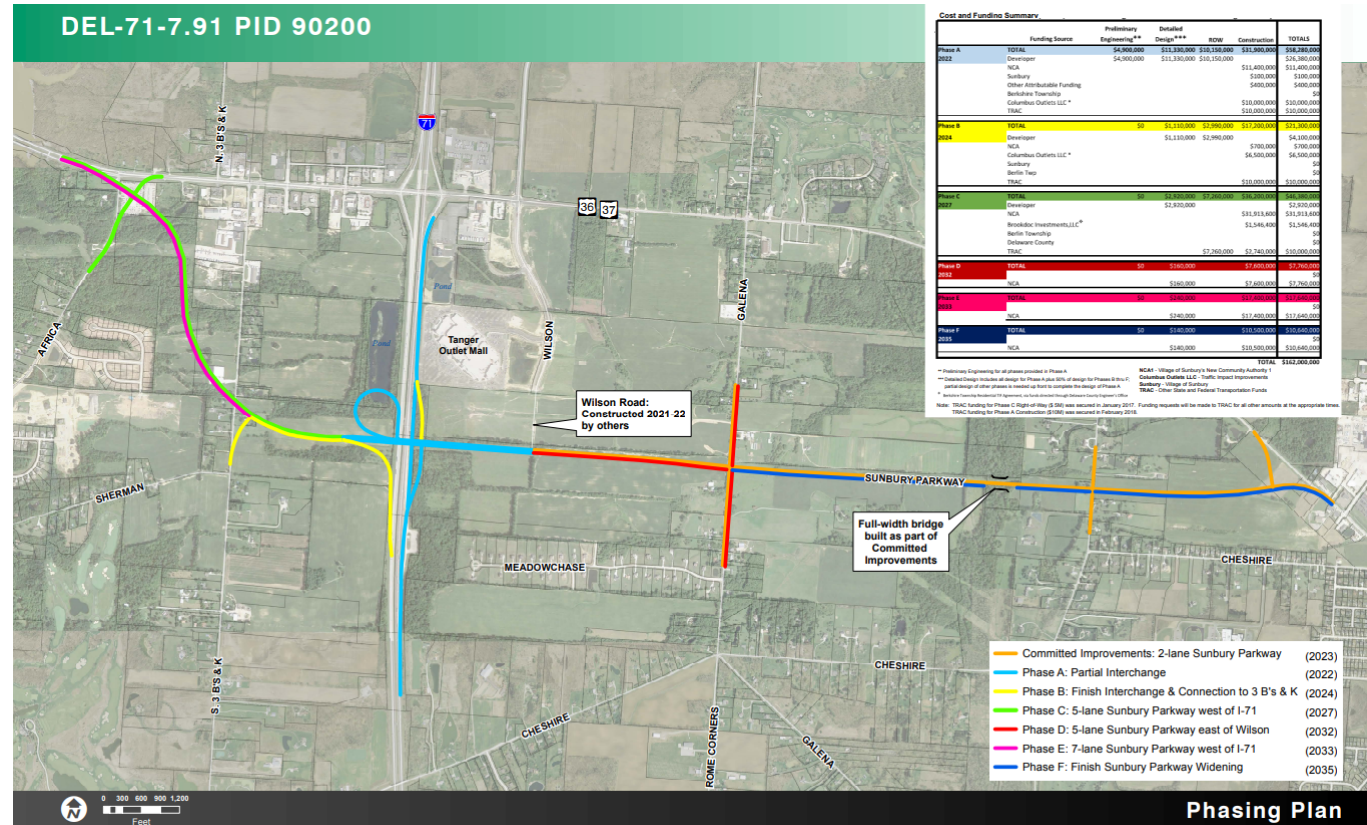
THE POINT

- Estimated \$30M Investment
- ODOT has added \$3.2M in funding
- MORPC has added \$1.8M
- January 2023 Sale



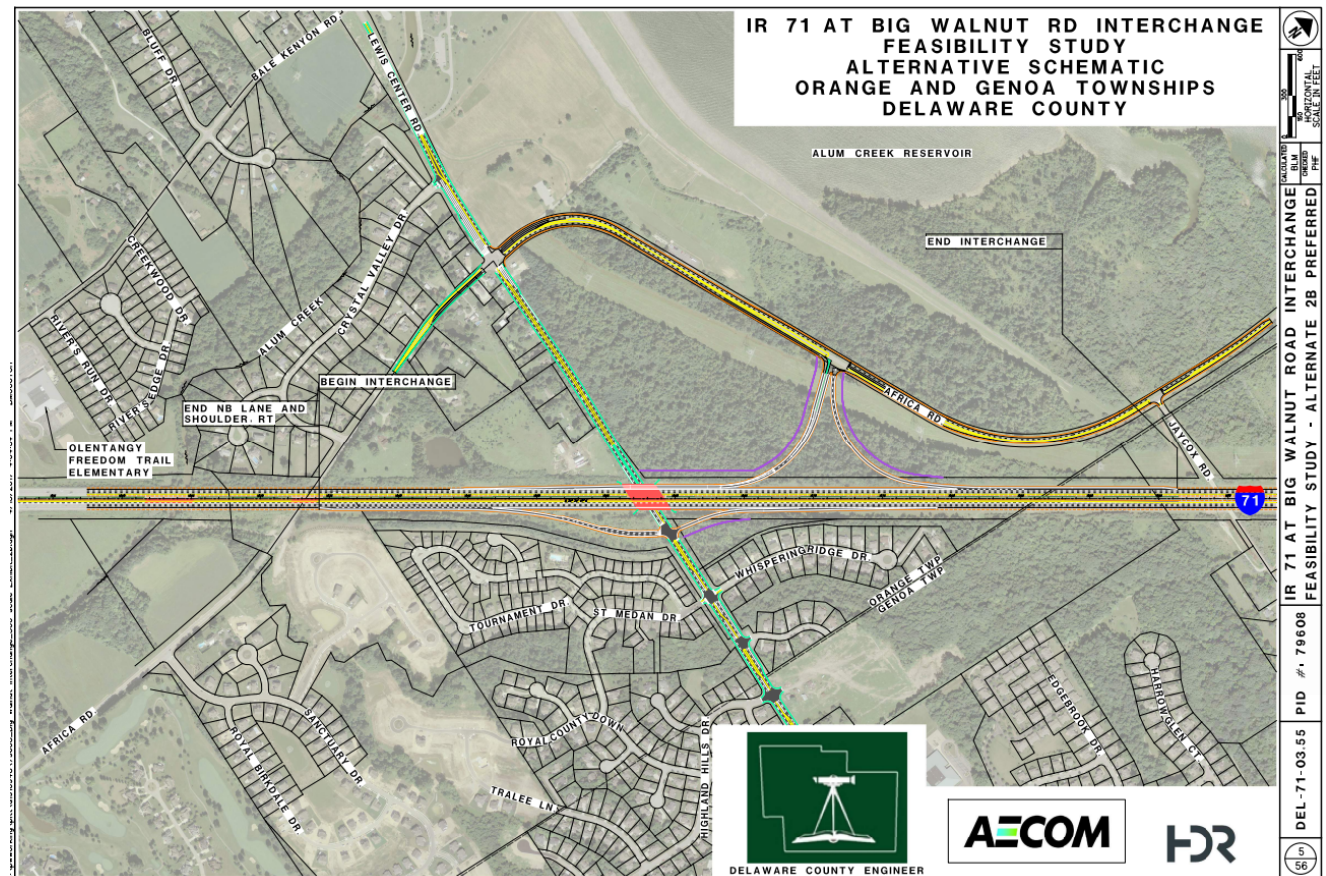
U.S. 36/I-71 INTERCHANGE

- Public Meeting in March
- Local funding support growing
- Phase A (blue) 30% plans under review



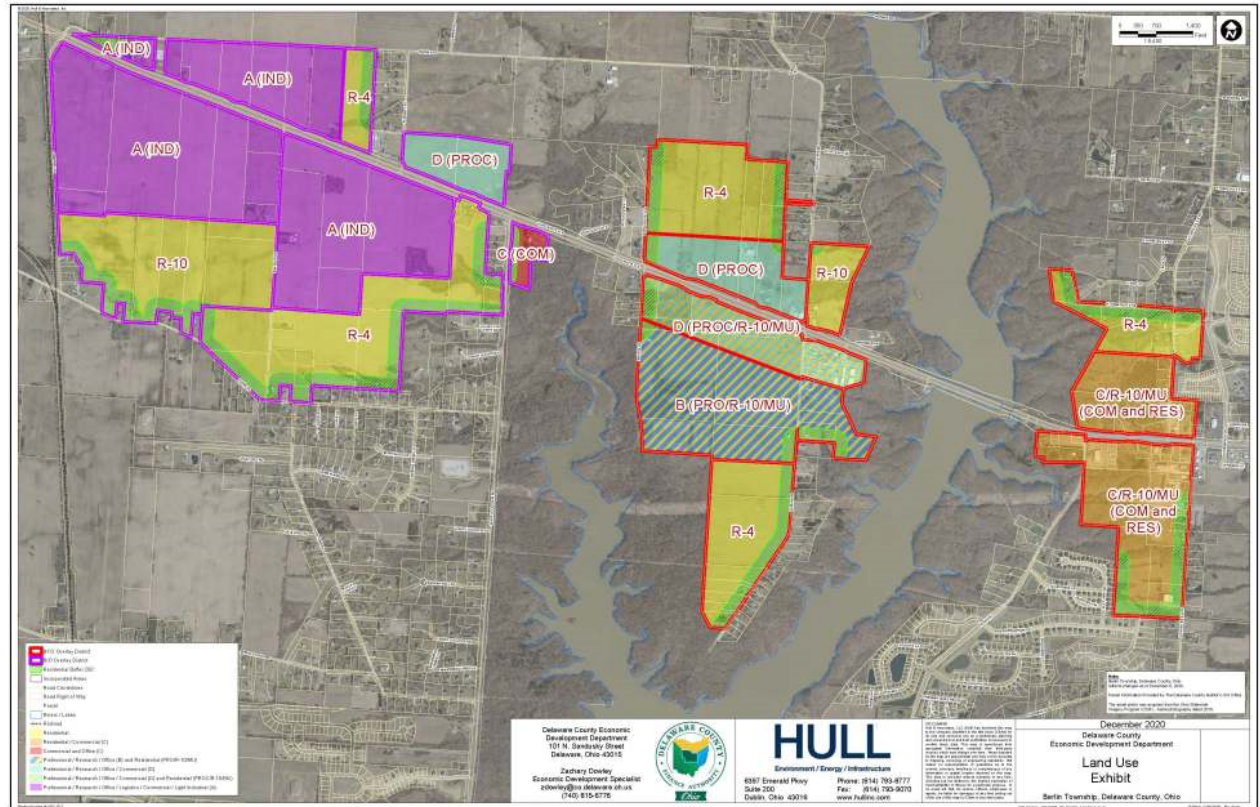
BIG WALNUT INTERCHANGE

- Burgess & Niple Authorized
- Public Interest Continues

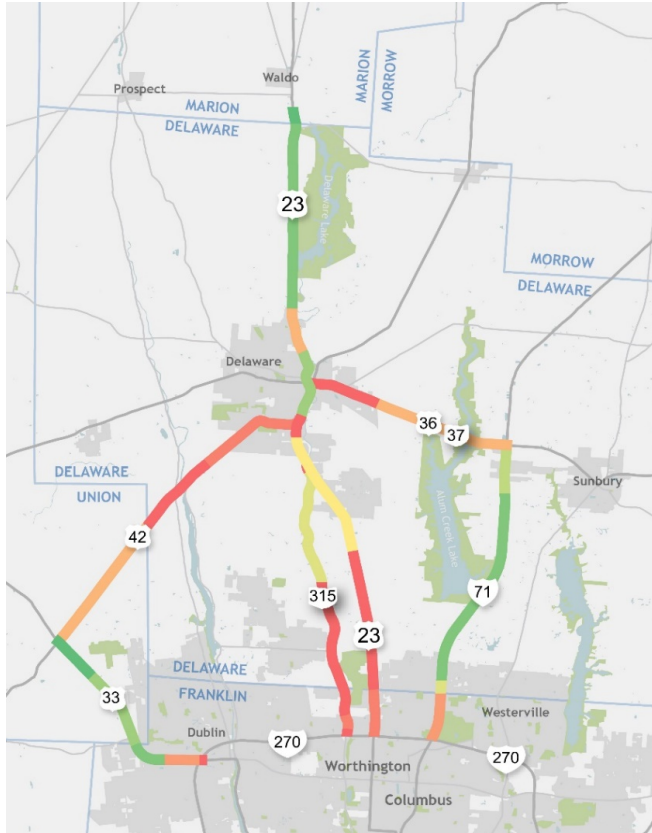


U.S. 36/SR 37 CORRIDOR

- ODOT study underway to channel development access productively
- Considers interim and final configurations



23 CONNECT - NEXT STEPS



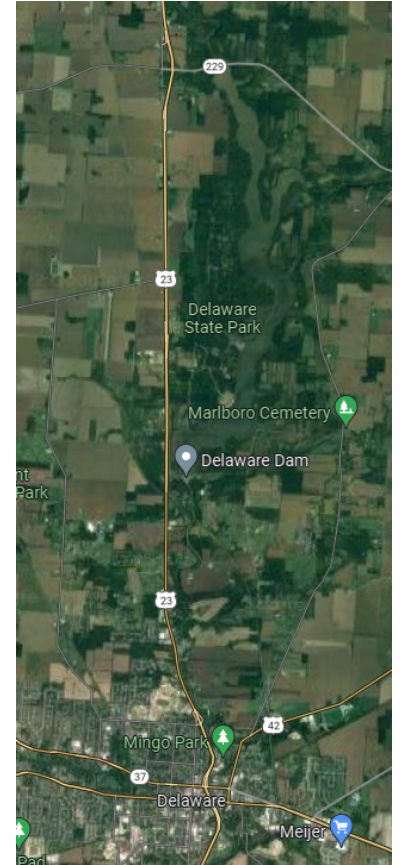
PHASE 2

- Identify and prioritize solutions to improve the flow of traffic along the existing corridor
- Evaluate multiple options for various segments of the existing U.S. 23 corridor between I-270 and Waldo
- Produce an action plan with recommended alternatives for specific projects
- First round of stakeholder outreach complete, public round in progress

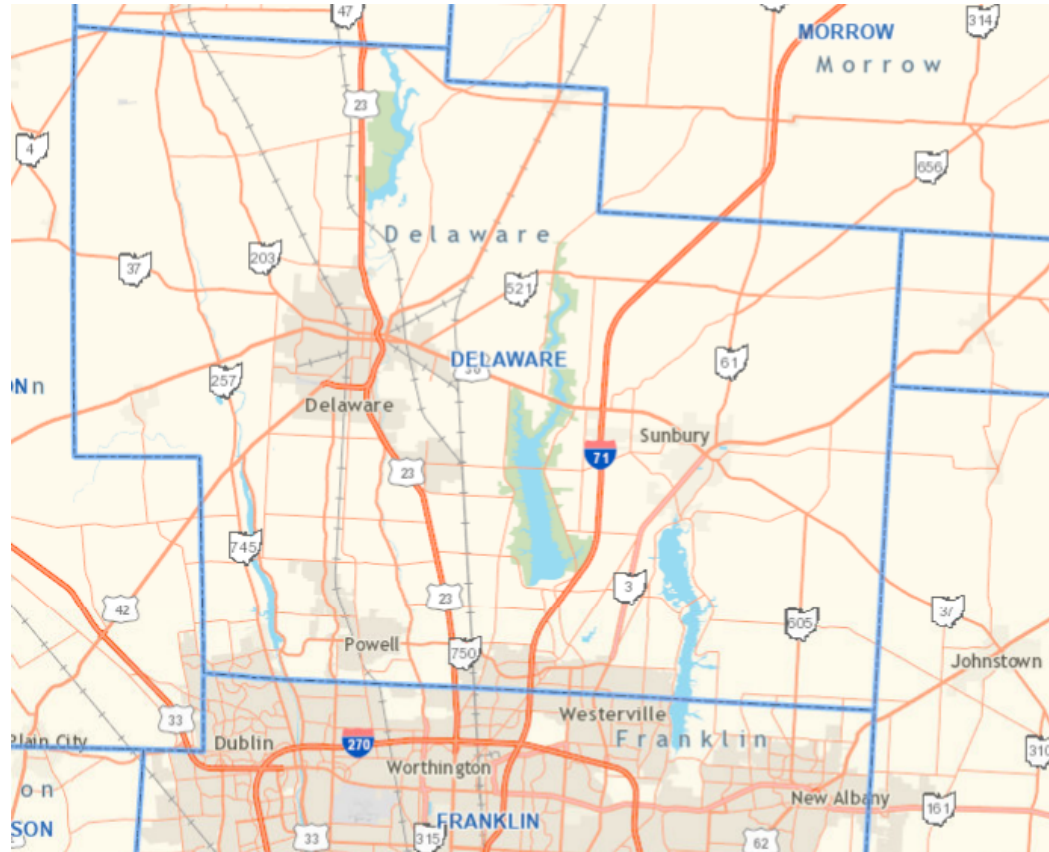
PLANNED INVESTMENTS

- **Submitted TRAC Application**

- Convert U.S. 23/SR 229 intersection to an interchange
- Remove traffic signal at U.S. 23 and Troutman Rd., convert intersection to RCUT
- Study possibilities to consolidate/eliminate 5 traffic signals between Coover Rd. and Pennsylvania Ave while maintaining property access



DISCUSSION



QUESTIONS



Last updated 11/27/2022