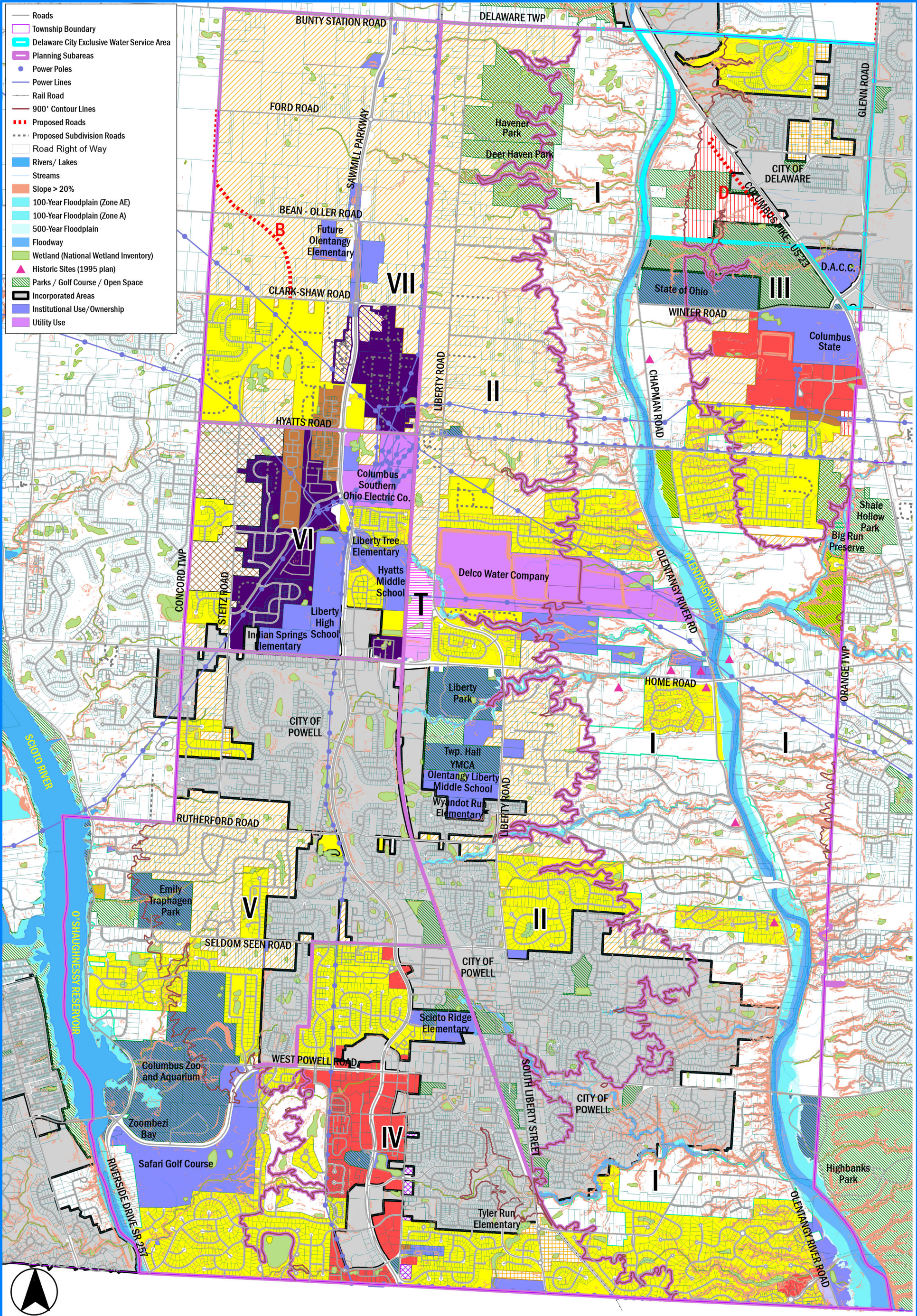


Liberty Township Comprehensive Plan (2040) Draft



- Planned Commercial - Office + Multi Family at 4 du per N.D.A.
- Planned Office or Residential at 1.5 du per N.D.A.
- Residential at 1.85 du per N.D.A. with Sanitary Sewer, or 1 du per N.D.A. without Sewer
- Residential at 1.5 du per N.D.A. with Sanitary Sewer, or 1 du per N.D.A. without Sewer
- Residential at 1.25 du per N.D.A. with Sanitary Sewer, or 1 du per N.D.A. without Sewer
- Olenangy and Scioto Watershed Corridors
- Residential at 1 du per N.D.A.
- Transitional Uses

- Farm Residence District (FR-1)
- Neighborhood Apartment District (R-3)
- Planned Residence District (PR)
- POD23
- Planned Overlay District (POD 18 D)
- Planned Overlay District applied
- Planned Multi-Family Residence District (PMFR)
- Planned Residence Conservation District (PRC)
- Neighborhood Retail District (C-2)
- Planned Elderly or Retirement Residential Community (PERRC)
- Planned Commercial District (PC)
- Industrial District (I)
- Planned Industrial District (PI)

0 1000 2000 3000 4000 5000 Feet

Scale: 1" = 3,000'

Prepared By: Delaware County Regional Planning Commission (740-833-2260)
GIS Data Provided by The Delaware County Auditor's Office
(Parcel, ROW, Road Centerlines, Hydrology, Municipal Boundary) (740-833-2070)
(Printed 5/2/2023)