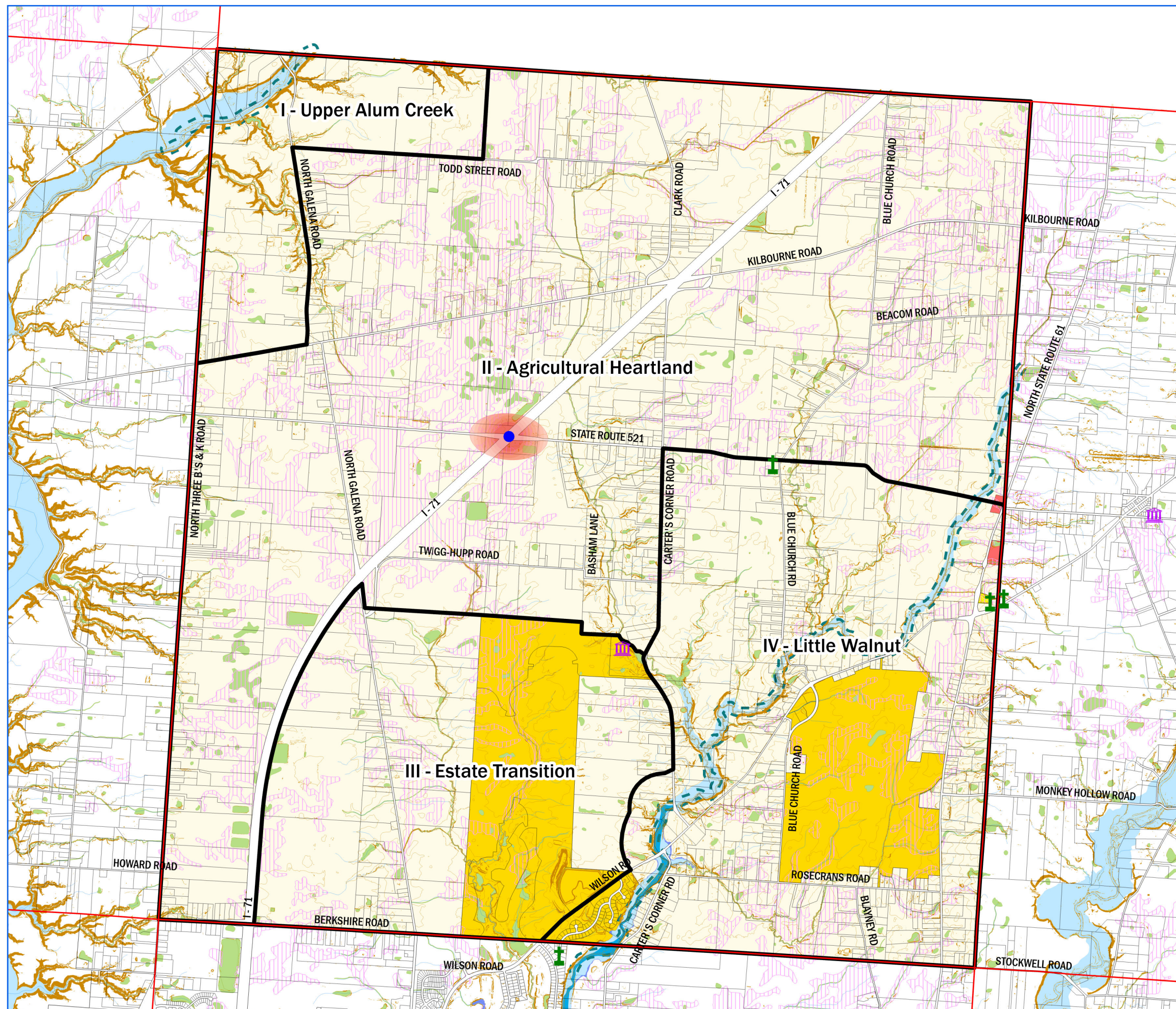
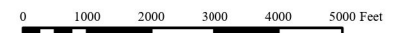


Kingston Township Comprehensive Land Use Plan

Adopted May 2, 2023



- Township Hall
- Cemeteries
- Township Boundaries
- Road Right of Way
- Property Lines
- Slope > 20%
- 10-foot Contour Lines
- 120' Buffer From Rivers
- Streams
- Pewamo Soil (PwA)
- Floodway
- Floodplain**
 - 100-Year Floodplain
 - 500-Year Floodplain
 - Wetland (NWI)
- 2001 County Thoroughfare Plan Proposed New Interchange
- Future Planned Commercial if Interchange is Built. Boundary to be Determined After Completion of Construction
- Recommended Land Use**
 - Single-family lots on minimum 1.951-acre lots without sewer or Conservation Subdivisions at 1 unit/1.951 acres with a half-acre lot size and 50% open space
- Kingston Township Zoning**
 - Farm Residence District (FR-1)
 - Planned Residence District (PRD)
 - Neighborhood Office District (C-1)
 - Neighborhood Commercial District (C-2)
 - Planned Commercial and Office District (PC)
 - Agricultural Preservation District (A-1)
 - Institutional District (INS)
 - Planned Institutional District (PINS)
 - Recreational District (REC)
 - Adult Entertainment (AE)
- Delaware County Zoning**
 - Medium Density Residential District (R-3)



Map Scale 1" = 3000'