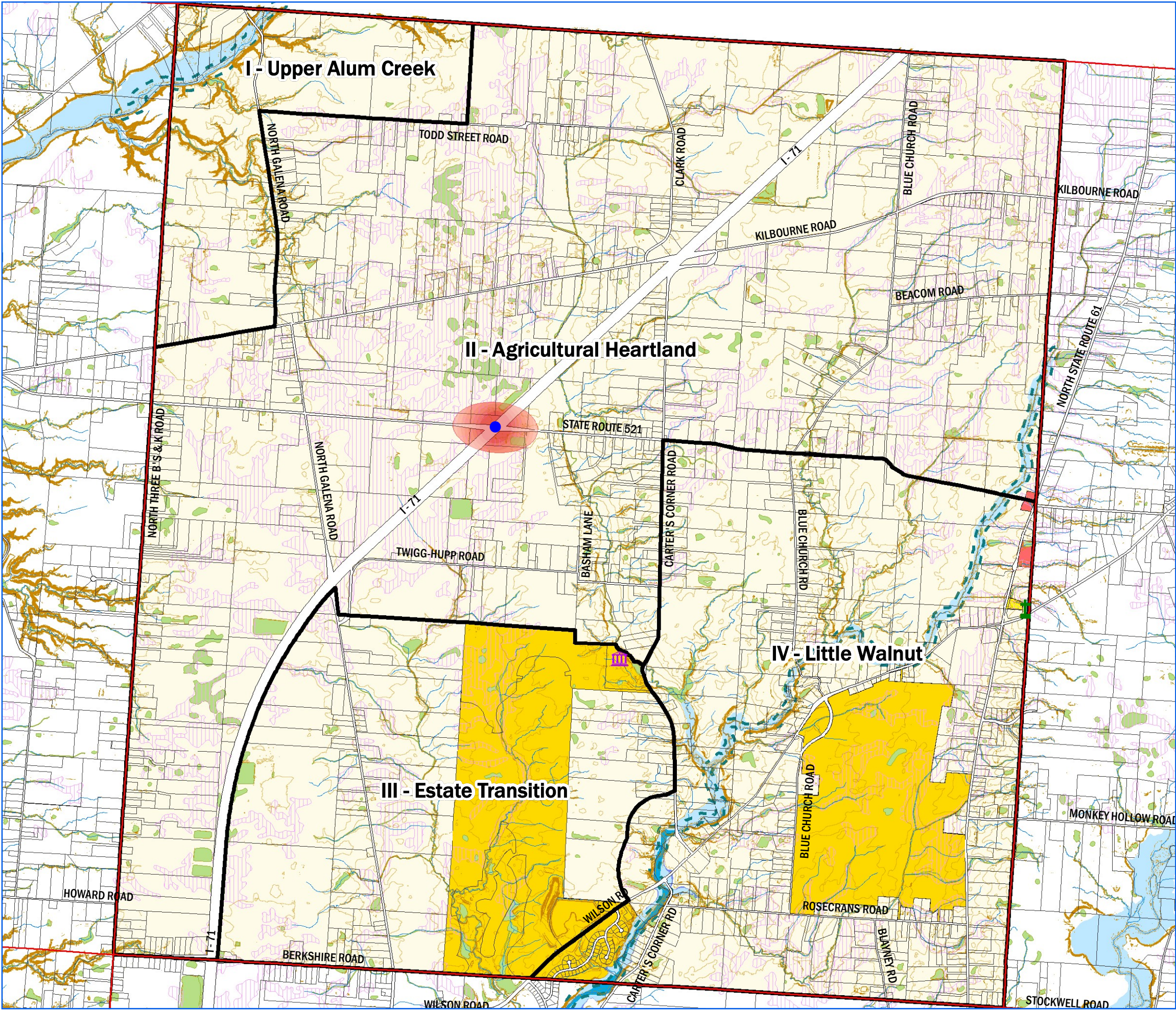


Kingston Township Comprehensive Land Use Plan

Draft 2022



- Township Hall
- Cemeteries
- Township Boundaries
- Road Right of Way
- Property Lines
- Slope > 20%
- 10-foot Contour Lines
- 120' Buffer From Rivers
- Streams
- Pewamo Soil (PwA)
- Floodway
- Floodplain
 - 100-Year Floodplain
 - 500-Year Floodplain
 - Wetland (NWI)
- 2001 County Thoroughfare Plan Proposed New Interchange
- Future Planned Commercial if Interchange is Built. Boundary to be Determined After Completion of Construction
- Single-family lots on minimum 1.951-acre lots without sewer or Conservation Subdivisions at 1 unit/1.951 acres with a half-acre lot size and 50% open space
- Farm Residence District (FR-1)
- Planned Residence District (PRD)
- Neighborhood Office District (C-1)
- Neighborhood Commercial District (C-2)
- Planned Commercial and Office District (PC)
- Agricultural Preservation District (A-1)
- Institutional District (INS)
- Planned Institutional District (PINS)
- Recreational District (REC)
- Adult Entertainment (AE)
- Delaware County Zoning
 - Medium Density Residential District (R-3)

