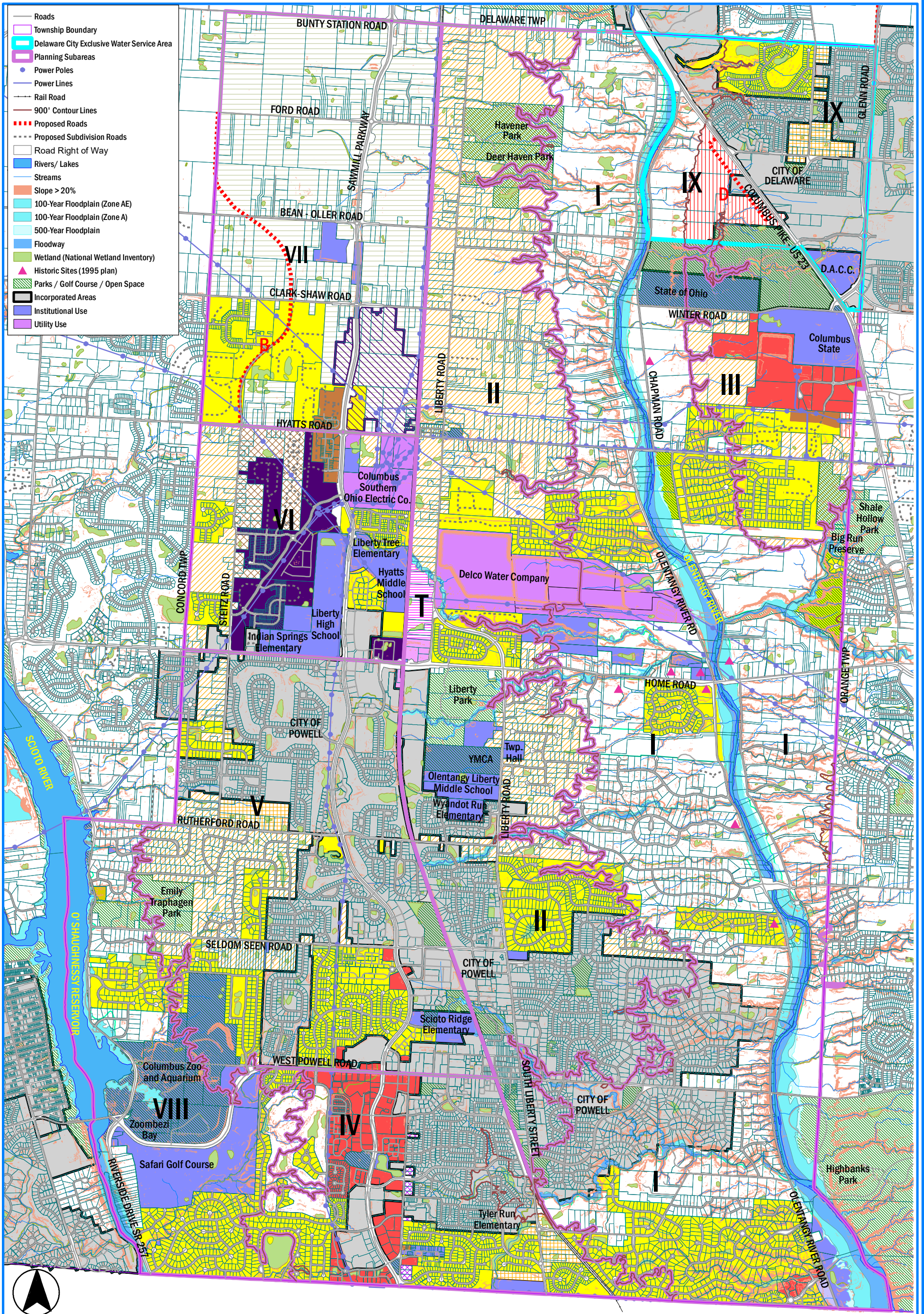


Liberty Township Comprehensive Plan (2018)



	Planned Commercial - Office + Multi Family at 4 du per N.D.A.
	Planned Office or Residential at 1.5 du per N.D.A.
	Residential at 1.85 du per N.D.A. with Sanitary Sewer, or 1 du per N.D.A. without Sewer
	Residential at 1.5 du per N.D.A. with Sanitary Sewer, or 1 du per N.D.A. without Sewer
	Residential at 1.25 du per N.D.A. with Sanitary Sewer, or 1 du per N.D.A. without Sewer
	Northwest Greenbelt - 1 du per N.D.A.
	Olentangy and Scioto Watershed Corridors
	Residential at 1 du per N.D.A.
	Transitional Uses

	Farm Residence District (FR-1)
	Neighborhood Apartment District (R-3)
	Planned Residence District (PR)
	POD23
	Planned Overlay District (POD 18 D)
	Planned Overlay District applied
	Planned Multi-Family Residence District (PMFR)

	Planned Residence Conservation District (PRC)
	Neighborhood Retail District (C-2)
	Planned Elderly or Retirement Residential Community (PERRC)
	Planned Commercial District (PC)
	Industrial District (I)
	Planned Industrial District (PI)



Scale: 1" = 3,000'

Prepared By: Delaware County Regional Planning Commission (740-833-2260)
 GIS Data Provided by The Delaware County Auditor's Office
 (Parcel, ROW, Road Centerlines, Hydrology, Municipal Boundary) (740-833-2070)
 Adopted 02/05/2018.
 (Printed 12/16/2021)