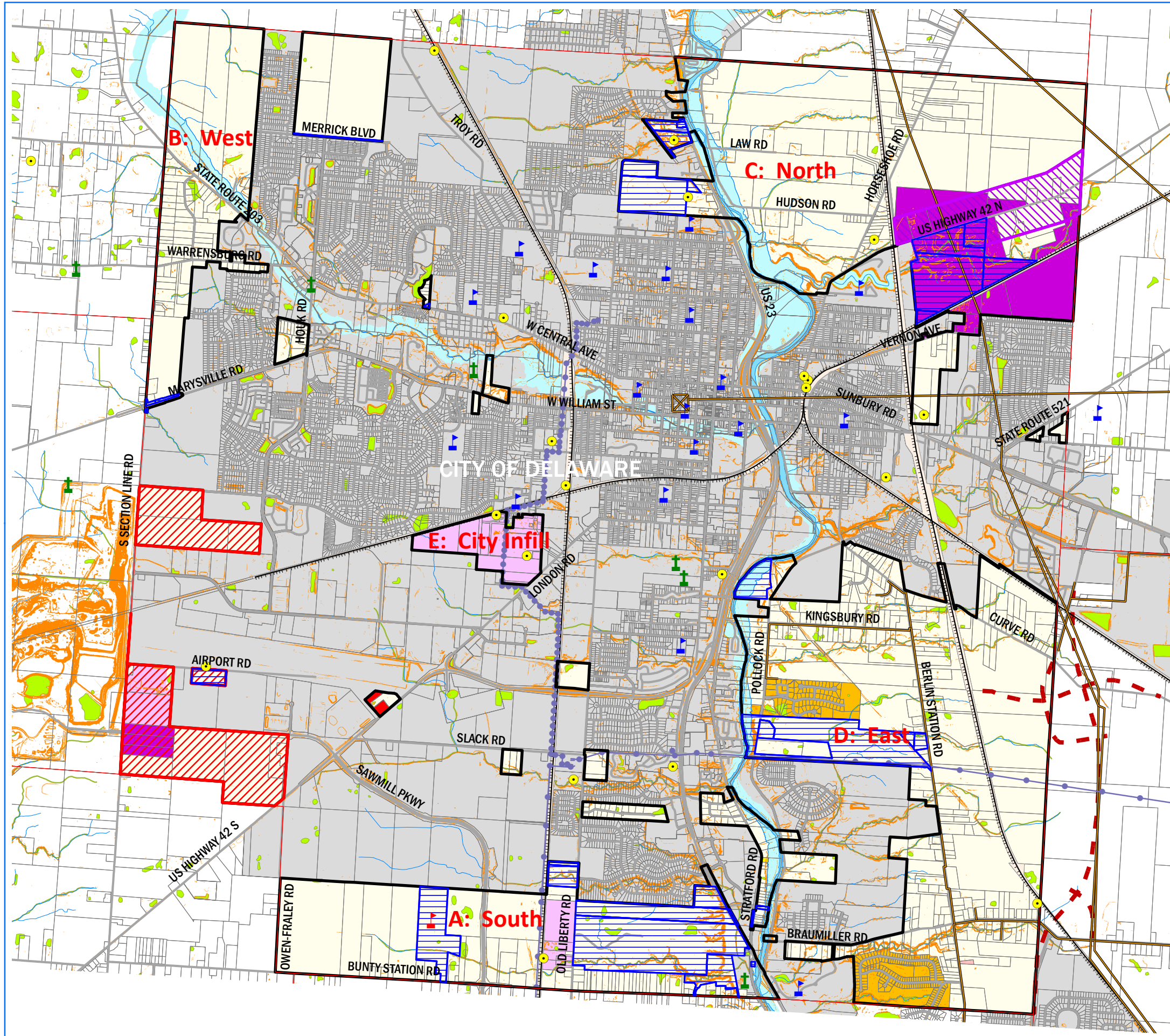


Delaware Township Comprehensive Land Use Plan

Draft 2022



- Antenna Structure Registrare
- Cemeteries
- Existing Schools
- Future Schools
- Township Hall
- Fire Departments
- EMS Station
- Township Boundaries
- Planning Subareas
- Power Poles
- Power Lines
- Gasline
- Railroad
- Proposed Glenn Parkway
- Road Centerlines
- Property Lines
- Slope > 20%
- Rivers/Lakes
- Streams
- 100-Year Flood Plains
- Wetland (National Wetland Inventory)
- Incorporated Areas
- Institutional Uses
- Proposed Land Use**
- Single Family on 1.5-acre lots without sewer or 2 units per acre with sewer on 1/3 acre lots
- Commercial and Light Industrial
- Industrial and Manufacturing
- Delaware Township Zoning**
- Farm Residential District (FR-1)
- Low Density Residential District (R-2)
- Planned Residential District (PRD)
- Neighborhood Commercial and Office District (C-1)
- Planned Commercial and Office District (PCD)
- Industrial District (I)
- Planned Industrial District (PID)
- Floodplain Regulatory District (FPRD)
- Historic Residence District (HRD)
- City of Delaware



Map Scale: 1" = 3,000'