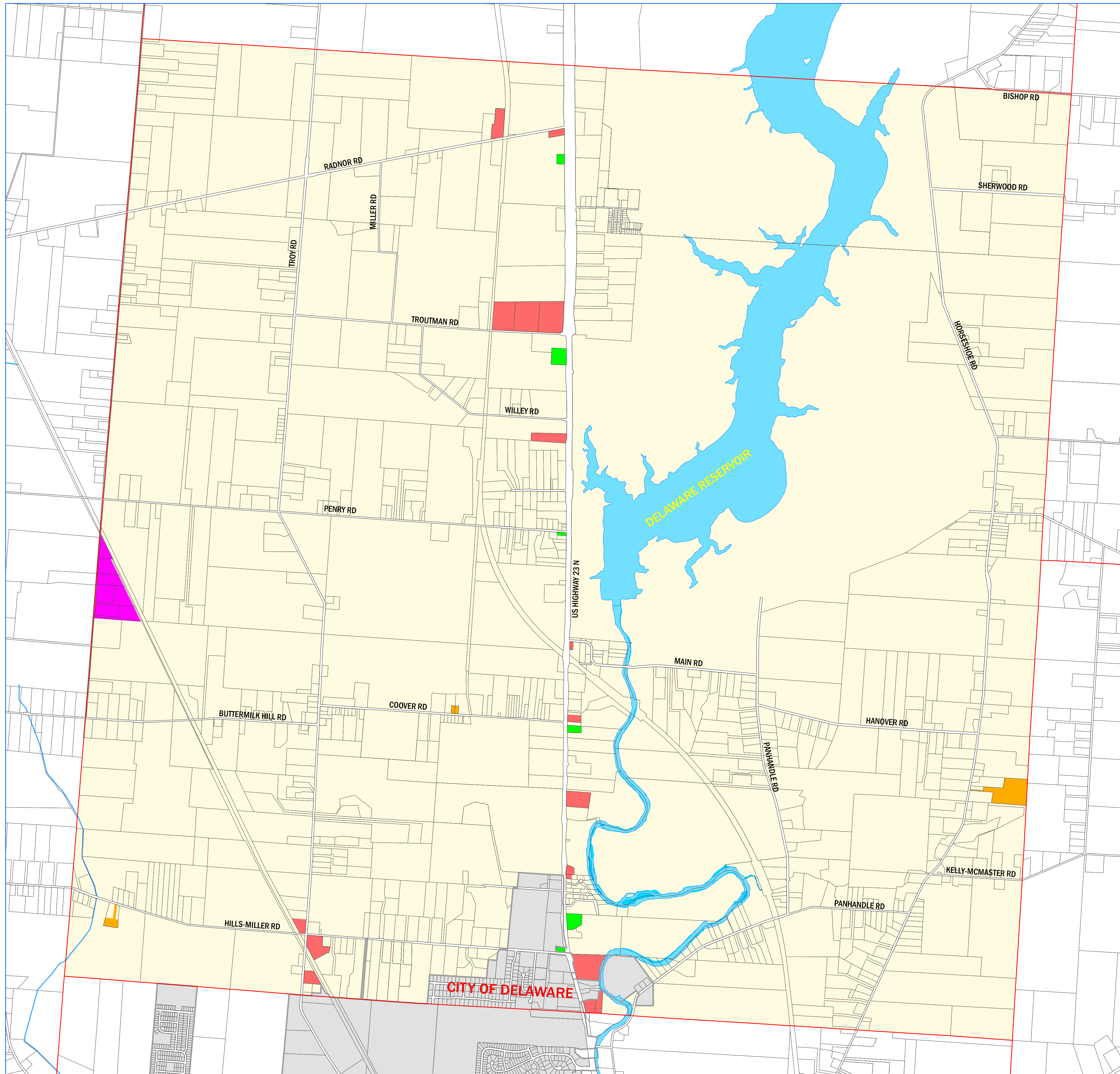


# Troy Township Zoning Districts Map Delaware County, Ohio

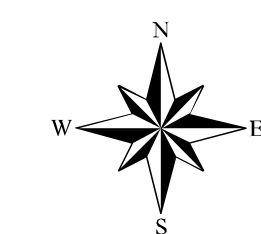
Official Zoning Map as amended \_\_\_\_\_

Board of Township Trustees

Zoning Inspector  
Troy Township, Delaware County, Ohio



- Township Boundary
- Incorp. Area Boundaries
- Road Right of Way
- Property Lines
- Rivers/Lakes
- Troy Township Zoning**
- Farm Residential District (FR-1)
- Planned Residential District (PRD)
- Planned Commercial and Office District (PCD)
- Planned Industrial District (PID)
- City of Delaware
- Non-Conforming Use
- Highway Service District
- River
- Road



Prepared By: Delaware County Regional Planning Commission (740-833-2260)  
[www.dcrpc.org](http://www.dcrpc.org)  
 Parcel Information Provided by The Delaware County Auditor's Office  
 Further Information is available by contacting the Auditor's GIS Office (740-833-2070)  
 Zoning Information provided by Troy Township (740-362-4534)  
 Printed 12/9/2020

