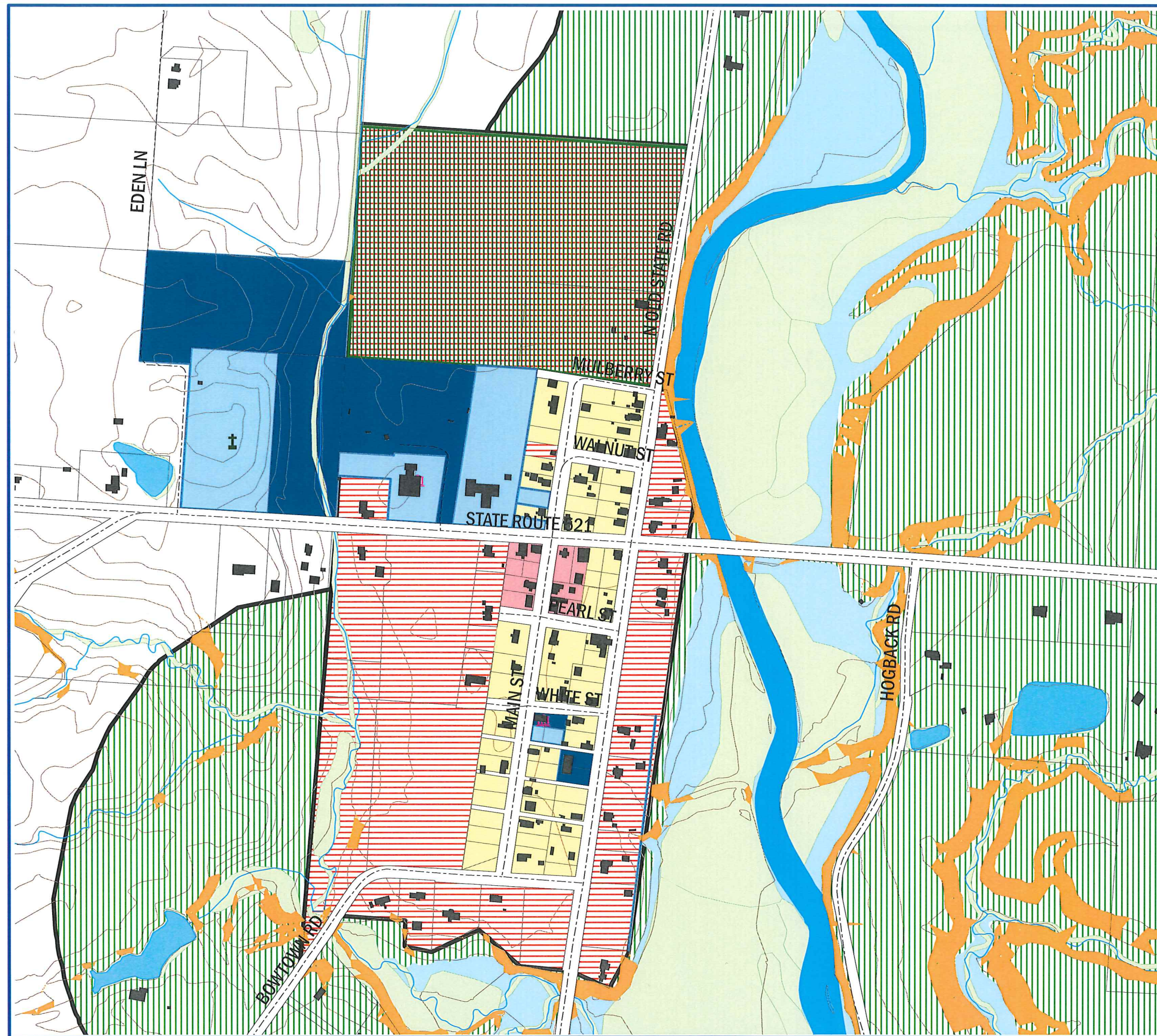
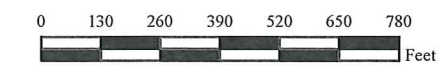


Brown Township Comprehensive Plan

Kilbourne Area
Adopted March 12, 2019



- Existing Structures
- Township Hall
- Schools
- Cemetery
- Centerlines of Roads
- Marathon Pipe Line
- Road ROW
- Property Lines
- Slope < 20%
- Slope > 20%
- Topography
- Rivers / Lakes / Ponds
- Streams
- Wetlands (NWI)
- Township Lands
- Institution
- Potential Twp. Park/Rec. Area
- Floodplains**
- 100-Year Floodplain (Zone AE)
- 100-Year Floodplain (Zone A)
- 500-Year Floodplain
- Floodway
- Existing Zoning**
- Farm Residence District (FR-1)
- Low Density Residential District (R-2)
- Medium Density Residential District (R-3)
- Planned Residential District (PRD)
- Neighborhood Office District (C-1)
- Neighborhood Commercial District (C-2)
- Planned Commercial and Office District (PC)
- Industrial District (I)
- Planned Industrial District (PI)
- Agricultural Preservation District (A-1)
- Planning Areas and Proposed Land Use**
- Planned Commercial and Office District
- Planned Industrial District
- Delaware City
- 1 - Growth District (1 du/2ac w/o San Sewer or 1.25 du/1ac w San Sewer)
- 2 - Agricultural Heartland (1 du/2ac)
- 3 - Old Kilbourne Village District (1 du/2ac w/o San Sewer or 2 du/ac w San Sewer)
- 4 - Critical Resource District (1 du/5ac)
- 5 - Estate Conservation District (1 du/3ac)



Scale: 1" = 3000'

Prepared by the Delaware County Regional Planning Commission (740-833-2260)
Topo & Parcel information provided by the
Delaware County Auditor's GIS Department (740-833-2070)