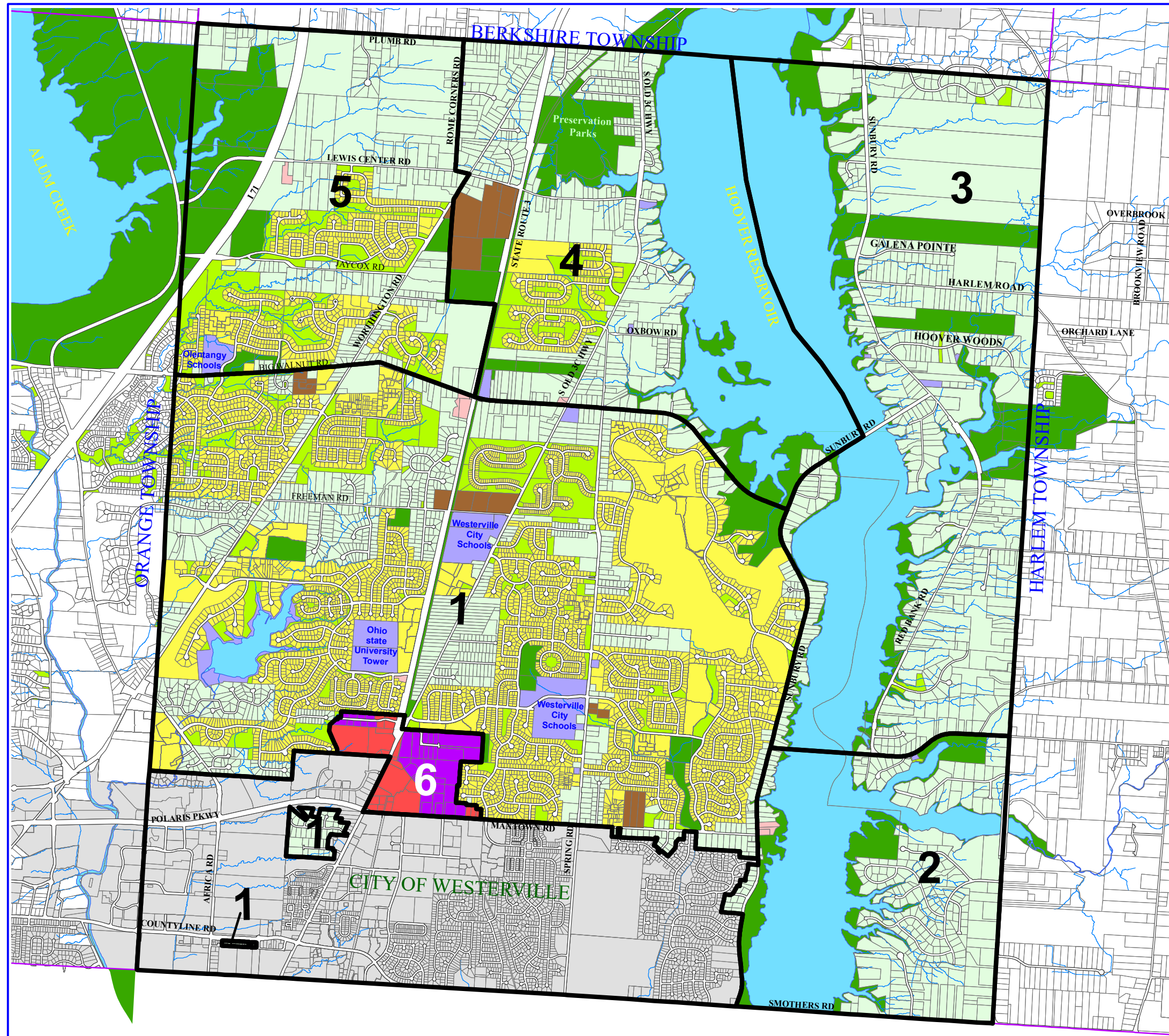


# Genoa Township

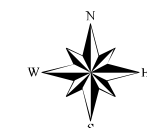
## Comprehensive Land Use Plan 2016

Delaware County, Ohio

Adopted January 17, 2019



- Development Plan Sub-Areas
- Township Boundary
- Road Right of Way
- Property Lines
- Rivers/Lakes
- Streams
- Recommended Future Land Use**
  - Neighborhood-Scale Commercial (Planned)
  - Commercial-Office (Planned)
  - Industrial (Planned)
  - Community Facility (Planned)
  - Public-Institutional
  - Parks and Recreation
  - Open Space
  - Residential or Planned Residential
  - Planned Residential



Scale: 1" = 3,000'

Prepared By: Delaware County Regional Planning Commission (740) 833-2260  
[www.dcrpc.org](http://www.dcrpc.org)  
 Original Data Provided by The Delaware County Auditor's GIS Office  
 (Parcels, Hydrology, Township Boundary, Incorp. Areas. Topo)  
 (Printed 1/17/2019)