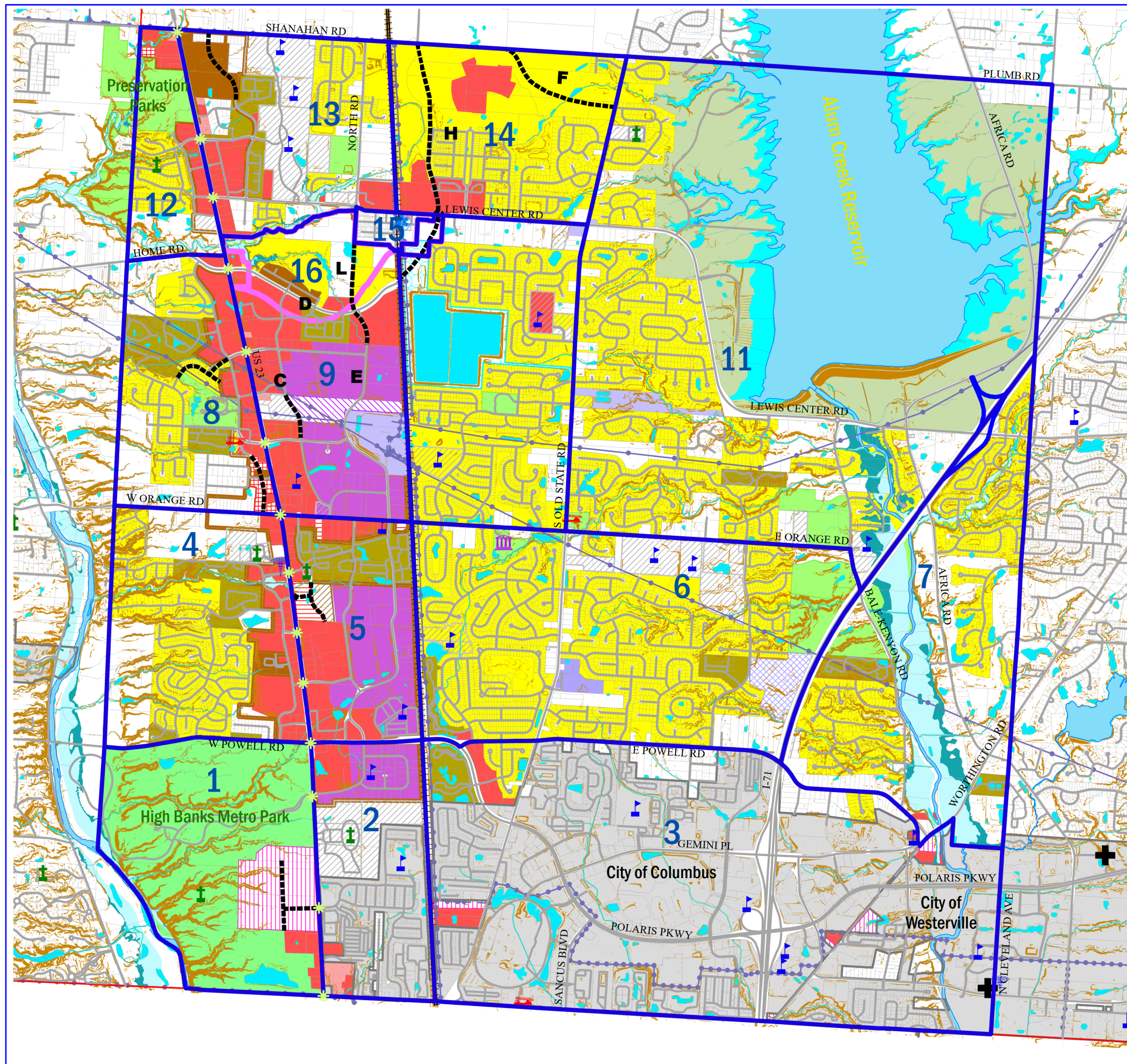


Orange Township Comprehensive Land Use Plan

Adopted November 19, 2018



- Existing US 23 Signals
- Planning Subareas
- Cemeteries
- Existing Schools
- Proposed Schools
- Possible Interchange
- Emergency Services**
- Township Hall
- Fire Departments
- EMS Station
- Hospital
- Urgent Care
- Proposed Roads
- Street centerlines
- Township Boundaries
- Power Poles
- Power Lines
- Railroad
- Road Right of Way
- Property Lines
- Rivers/Lakes
- Streams
- Wetland (National Wetland Inventory)
- Flood Plains**
- 100-Year Floodplain (Zone AE)
- 100-Year Floodplain (Zone A)
- 500-Year Floodplain
- Slope > 20%
- Del-Co Water Reservoir
- Public Utilities
- Public/Institutional Lands
- Incorp. Area Boundaries
- Future / Current Parks**
- Future / Current Parks
- Proposed Land Use**
- Single Family at 1 du/ac without Water & Sewer or Planned Single Family at 2 du/ac with Water & Sewer
- Commercial or Office, or Multi Family at 2 du/ac
- Planned Commercial
- Planned Office/Planned Commercial
- Planned Office/Institution
- Planned Industrial
- Delaware County Alum Creek Waste Water Treatment Plant
- Orange Zoning**
- Farm Residence District (FR-1)
- Low Density Residence District (R-2)
- Medium Density Residence District (R-3)
- Single-Family Planned Residence District (SF-PRD)
- Multi-Family Planned Residence District (MF-PRD)
- Neighborhood Office District (C-1)
- Neighborhood Commercial District (C-2)
- Planned Commercial and Office District (PC)
- Planned Elderly Residential District (PERD)
- Industrial District (I)
- Planned Industrial District (PI)
- Agricultural Preservation District (A-1)
- RCOD, Route 23 Overlay (RCOD)
- RCOD Applied (RCOD)
- Alum Creek State Park
- Highbanks Park



0 1000 2000 3000 Feet
SCALE 1" = 3,000'