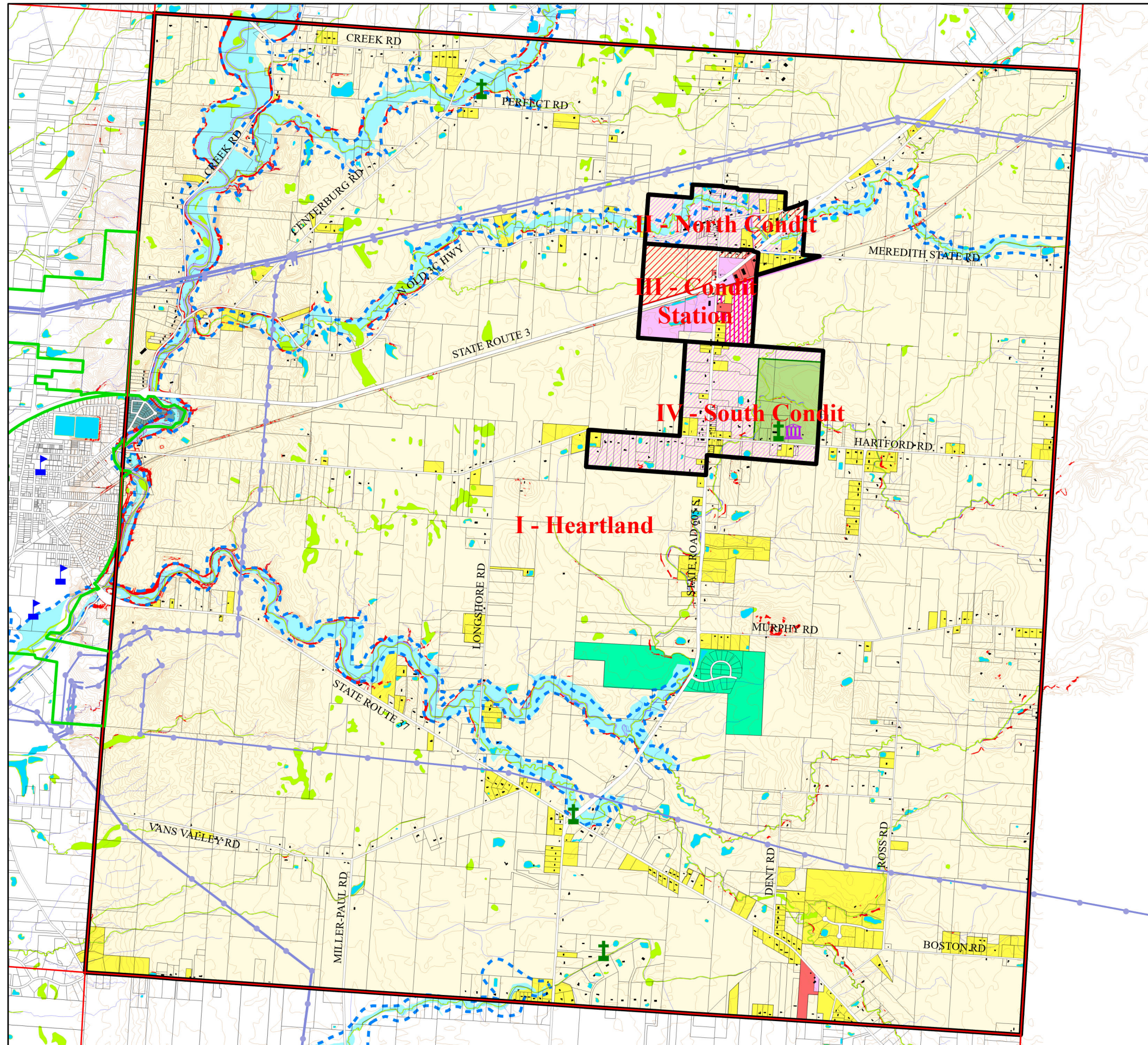


# Trenton Township Comprehensive Plan

Adopted 1/2004



- Township Boundaries
- Incorp. Area Boundary
- Planning Sub Areas
- ⌘ Township Hall
- + Cemetery
- ⌘ Schools
- Power Poles
- Power Lines
- Existing Structures
- Contour Lines
- Property Lines
- Centerlines of Roads
- Streams
- Wetlands (NWI)
- - - 50 feet Buffer from 100-Year Flood Plain
- 100 yr Floodplain
- 500 yr Floodplain
- Slopes > 20%
- Potential Township Park
- Proposed Land Use**
- ▨ Planned Commercial or Office
- ▨ Light Industrial or Commercial Use
- Single Family at 1 du per 3 acres w/o sewer or Conservation Subdivision at 1 du per 3 acres net developable area
- ▨ Single Family at 1 du per 3 acres w/o sewer. Potential Traditional Neighborhood Development as part of mixed use area if public water and sewer can be provided. 2 du per acre if any portion considered for sanitary sewer service without TND.
- Trenton Zoning**
- Farm Residential District
- Rural Residential District
- Farm Village District
- Community Business District
- Limited Industrial District
- Restricted Industrial District
- Village of Sunbury
- Road
- River



0 1000 2000 3000 4000 5000 Feet

Scale 1" = 3,000'

Prepared by: Delaware County Regional Planning Commission  
(740-833-2260) www.dcrpc.org  
Original Data Provided by The Delaware County Auditor's Office DALIS Project  
(Topo, Parcel, ROW, Municipal Boundary, Road Centerlines, Hydrology,  
Township Boundary, Floodplains) (740-833-2070)

Printed: 12/28/2023