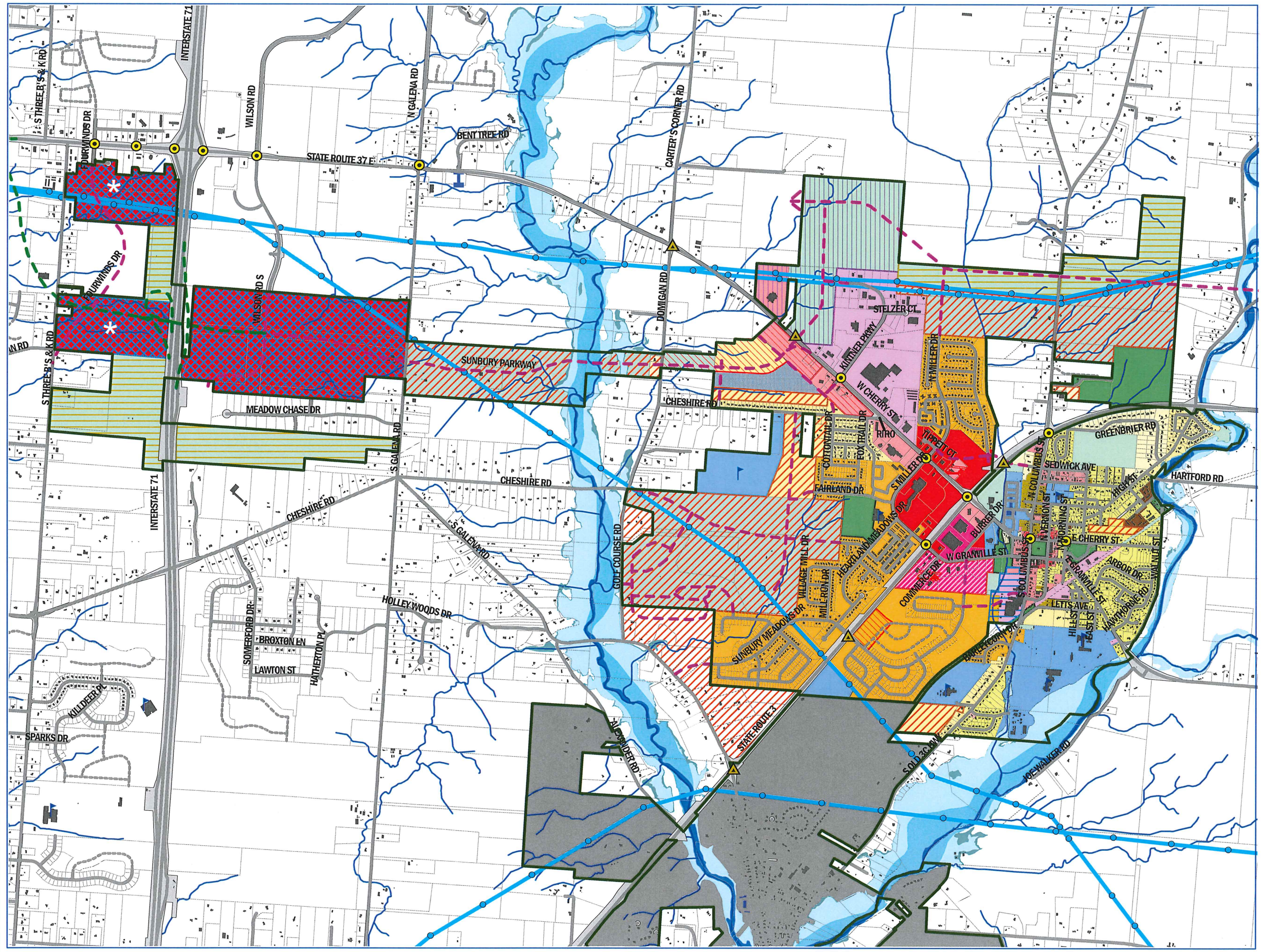


Village of Sunbury

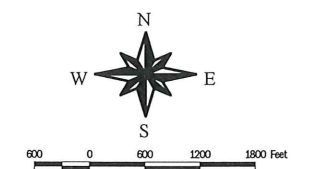
Future Land Use
Approved 11/02/16



- Existing and Future Signals**
- Existing (Yellow circle)
 - Proposed (Yellow triangle)
- Village of Sunbury**
- Interchange Green Alt.
 - Proposed New Roads (Dashed line)
 - Proposed Subdivision Roads (Twsp) (Dotted line)
- Other Features**
- Cemetery (Cross symbol)
 - Village Hall (Building icon)
 - Fire Department (Red truck icon)
 - Schools (Blue building icon)
 - Power Structure (Blue circle)
 - Power Lines (Blue line)
 - Structures (2010) (Grey rectangle)
 - Property Lines (Thin grey line)
 - Streams (Blue line)
 - Ponds/Lakes/Rivers (Blue area)
- Floodplains**
- Floodway (Light blue)
 - 100-Year Floodplain (Zone AE) (Medium blue)
 - 100-Year Floodplain (Zone A) (Dark blue)
 - 500-Year Floodplain (Lightest blue)
- Proposed Land Use**
- Parks (Green)
 - Planned Commercial (Red with diagonal lines)
 - Rezoned to Planned Commercial and Office (Red with horizontal lines)
 - Planned Industrial (Yellow with diagonal lines)
 - Mixed-Use District (Blue with diagonal lines)
 - T.N.D. @ 4 du per acre SF Design (Yellow)
 - Single Family @ 1.5 du per acre / N.D.A. (Light green)
 - Single Family @ 3 du per acre / N.D.A. (Orange)
 - Multi Family @ 6 du per N.D.A. (Pink)
 - Institutional (Light blue)
- Current Zoning**
- A-1, Agriculture Residential District (Lightest green)
 - R-1, Low Density Residential District (Light green)
 - R-2, Low Density Residential District (Medium green)
 - R-3, Low Density Residential District (Dark green)
 - R-4, Multi-Family Residential District (Brown)
 - R-5, Two-Family Residential District (Orange)
 - PRD, Planned Residential District (Yellow)
 - C-1, Neighborhood Office District (Light pink)
 - C-2, Commercial District (Pink)
 - C-3, Central Business District (Red)
 - PCD, Planned Commercial District (Dark red)
 - I, Industrial District (Purple)
 - PI, Planned Industrial District (Light purple)
 - River (Blue)
 - Road Right of Way (Thin grey line)
 - Village of Galena (Dark grey)

*Retained zoning from Berkshire Township per ORC 519.18 pending rezoning in the Village of Sunbury

"New Roads" typically indicate general routes and connections and not necessarily alignment. Local subdivision streets are not shown.



Prepared By: Delaware County Regional Planning Commission
(740) 833-2260 www.dcrpc.org
Original Data Provided by The Delaware County Auditor.
(Flood Plain, Hydrology, Contours, Parcels, Incorporated Areas, and Township Boundary.)
Printed 06/22/2017