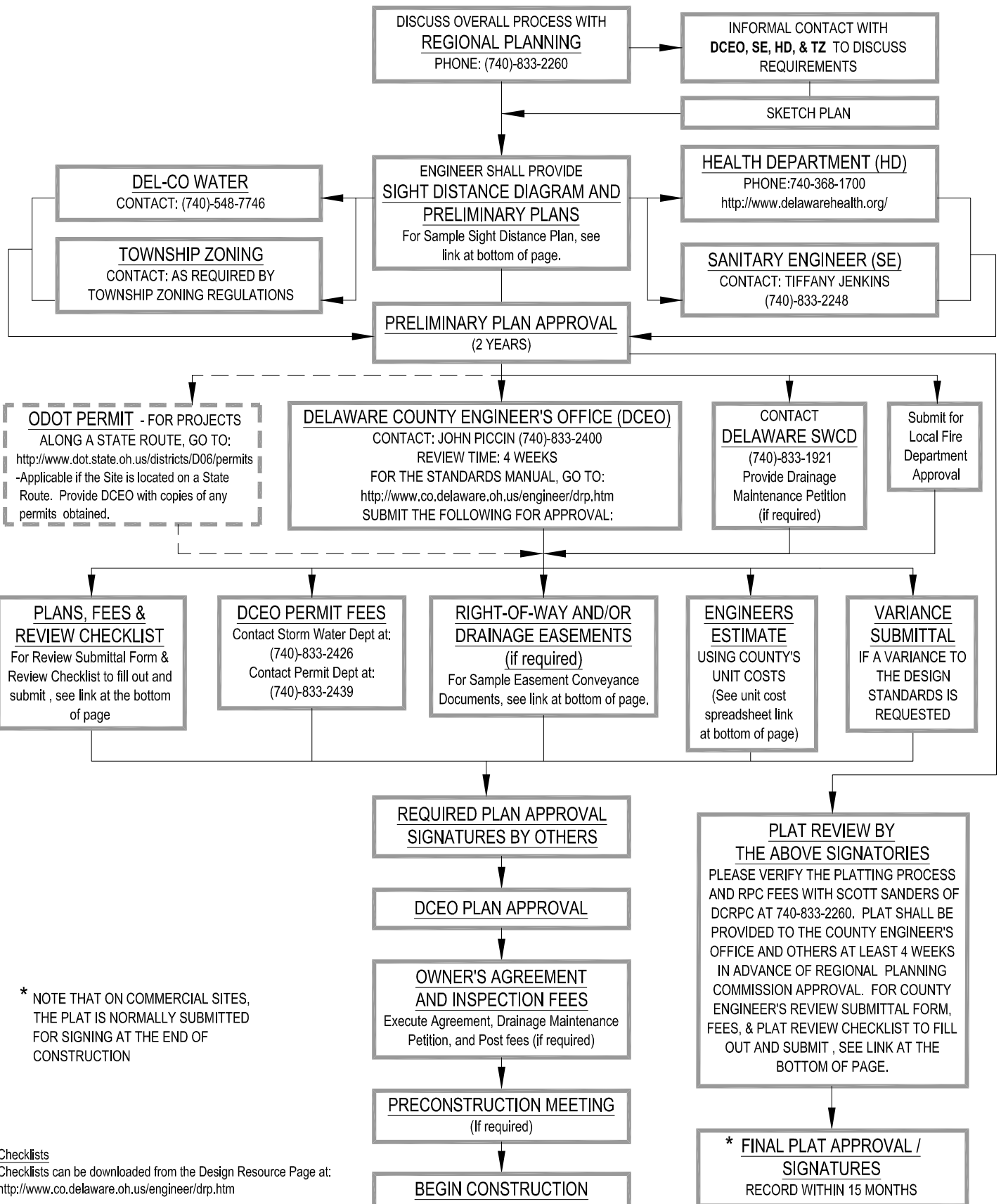




DELAWARE COUNTY ENGINEER'S OFFICE

**DEVELOPMENT FLOWCHART**

FOR SUBDIVISIONS, COMMERCIAL, MULTI-FAMILY, AND INDUSTRIAL SITES  
(IN CASES WHERE A PLAT IS INVOLVED)



\* NOTE THAT ON COMMERCIAL SITES, THE PLAT IS NORMALLY SUBMITTED FOR SIGNING AT THE END OF CONSTRUCTION

**Checklists**

Checklists can be downloaded from the Design Resource Page at:  
<http://www.co.delaware.oh.us/engineer/drpf.htm>

**Sample Links**

<http://www.co.delaware.oh.us/engineer/Development/Docs/ReviewSubmittalForm.pdf>  
<http://www.co.delaware.oh.us/engineer/development/Docs/SampleEaseConveyInstru.pdf>

<http://www.co.delaware.oh.us/engineer/Development/Docs/SightDistancePlan.pdf>  
<http://www.co.delaware.oh.us/engineer/Development/Docs/estconcostJune2010.pdf>